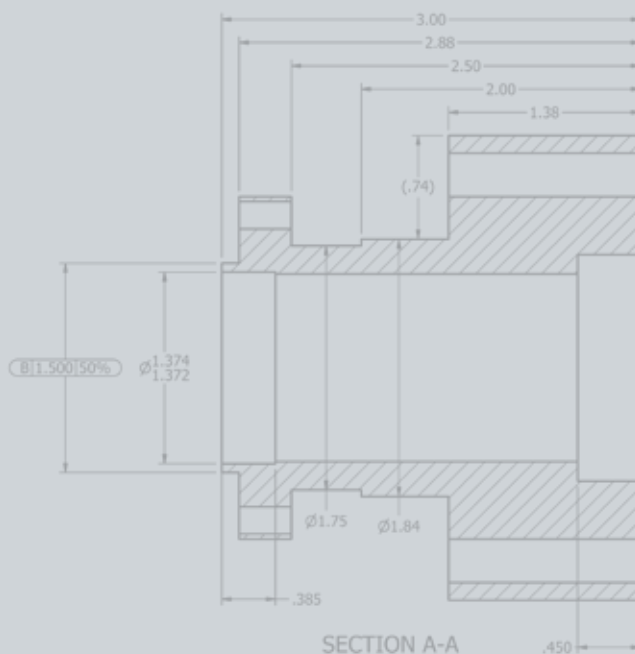
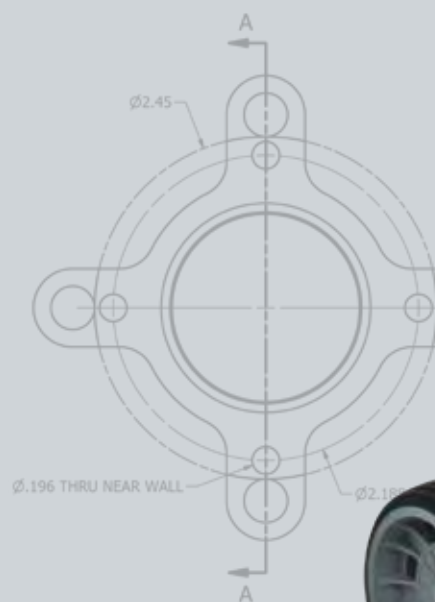
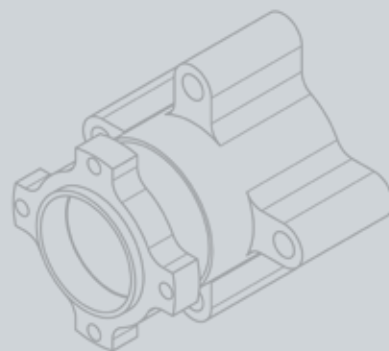


ISO 9001:2008 Certified



***b&p Manufacturing***  
***Engineered Delivery Products***

8051 East Boon Road  
Cadillac, Michigan 49601  
U.S.A.

(800)-334-7141

[www.bpmfg.com](http://www.bpmfg.com)



- B&P Manufacturing has been engineering and building the highest quality material handling products since 1945 where we began as Brooks and Perkins. Since then our products and processes have seen dramatic changes in order to keep in step with rapid advances in the industries our products serve.
- In 1996, the entire product line was re-engineered to replace old designs with newer, lighter weight and more durable designs. We continue to make major investments in new equipment, software and engineering personnel with one goal in mind; to offer our customer the best built, best backed products in the industry. As a result, we offer an industry exclusive two year warranty against manufacturers defects.
- In recent years we have focused on our company as a whole beyond the products we sell. We have received ISO 9001 Certification, WBE Certification, AWS Certification and are HUB Zone Certified, helping you achieve your supplier diversity goals with the best quality standards.
- B&P Manufacturing believes that good corporate citizenship is essential for the success of the company. We regularly make donations to our local charities as well as on a national level. Our pink hand truck program has been a hit, donating to local cancer fund raising events in the communities in which we serve. To date, we have donated hundreds of these trucks to this worthwhile cause.
- By continuing to work with drivers all over the country, we are able to engineer our products to be more ergonomically correct, reducing driver fatigue and risk of injury. Our products allow drivers to deliver more product, with increased efficiency.
- Our streamlined process and inventory levels of both raw materials and completed goods are expertly maintained. Whether you need one handle or 5,000 hand trucks, we respond quickly to your needs.
- Quite simply, our goal is to solve our customers toughest delivery challenges with the highest quality products made by our dedicated team of men and women here in Northern Michigan.



- Proudly Made in the U.S.A. -





A11-B1-C6-D5-E1L-E60

Liberator Hand Truck Features.....	2-3
Beverage Delivery Products .....	4-5
Liberator Brake Truck Features.....	6-7
Food Service Delivery Products .....	8-9
Build A Liberator Hand Truck.....	10-19
Handles.....	10-11
Frames.....	12
Nose Plates.....	13
Wheels.....	14
Accessories.....	15-17
Brakes.....	18-19
Liberator Hand Trucks.....	20-23
Liberator Heavy Duty Convertibles.....	20-21
Heavy Duty Powered Convertibles.....	22
Standard Capacity S-Series Hand Trucks.....	23
Standard Capacity Convertibles.....	23
Speciality Hand Trucks.....	24-27
Narrow Aisle Hand Trucks.....	24
Three Way Hand Trucks.....	24
Luggage Carts.....	25
Snack Food Delivery Hand Trucks.....	26
Telescoping Bin Delivery Hand Trucks.....	26
Folding Snack Hand Trucks.....	27
Hand Truck Curb Ramps/Boards.....	28-29
Aluminum Curb Ramps.....	28
Aluminum Truck Boards.....	29
Apron Hand Truck Dock Boards.....	29
Dairy Hand Truck Dock Boards.....	29
Walk Boards.....	29
Bulk Delivery Systems.....	30-33
Heavy Duty Bulk Delivery Carts.....	30-31
Universal Bulk Delivery Carts.....	32
Bulk Cart Curb Ramps.....	32
Warehouse Carts.....	33
Walkie Rider Bulk Delivery Carts.....	33
Aluminum Platform Trucks.....	34-35
Aluminum Pallet Dollies.....	36
Aluminum Wheel Ramps.....	36
5/16" Aluminum Dock Plates.....	37
5/16" Welded Curb Dock Boards.....	37
Steel Curb Dock Boards.....	38-39
Aluminum Dock Plates.....	40-41
Walk Ramps.....	42-43
Twin Tooth Traction Walk Ramps.....	42
Punched Traction Walk Ramps.....	43
HTS Ultra-Rack.....	44

### Two Year Limited Warranty

B&P Manufacturing products have a two (2) year limited warranty covering failure due to defective material or workmanship. This warranty covers the following components: hand truck frames, frame components, handles, extruded aluminum nose plates, nose plate brackets, axles, extruded aluminum stair climbers, stair climber components, frame extensions, walk ramps, dock boards, and dock plates. Parts not covered in the two (2) year warranty are: tires, inner tubes, wheels (unless otherwise specified), bearings, casters, lift chains, and other supplier specific parts. These parts carry a limited warranty by the supplier.

A two (2) year warranty applies to B&P Manufacturing bulk delivery carts.



A7-B1-C6-D5-E1E

**Features:**

- > **Wheels - Highest quality with up to a 3 year warranty**
- > **Extruded Axle Brackets - Lifetime warranty**
- > **Axle - 91,000 PSI tensile steel**
- > **Nose Plate - 6000 series for longer life**
- > **Frame - 600 lb. capacity, red and blue powder coating available**
- > **Cross Members - Four sided ribbed construction**
- > **Curved Cross Members - Extruded Aluminum**
- > **Rivets - 700 lb. aircraft grade**
- > **Handles - Ergonomically designed**
- > **Welded Handles - Heat treated**
- > **Logo Channel - For personalization**
- > **Parts are interchangeable with most competitors models**

**Features:**

- > 600 lb. capacity hand truck
- > 1,200 lb. capacity platform truck
- > Wheels - Highest quality in the industry
- > Cross Members - Four sided ribbed construction
- > TPR Casters - with brake on one side
- > Lock Bar - Solid, one piece construction
- > Logo Channel - For personalization
- > Rivets - 700 lb. aircraft grade
- > Extruded Wheel Brackets - Lifetime warranty



A13-B81-C6-D6SS

**LIBERATOR HEAVY DUTY  
CONVERTIBLE HAND TRUCK**





## >> BEVERAGE DELIVERY PRODUCTS

> POWDER COATING AND PERSONALIZED DECALS  
FOR EASY IDENTIFICATION



A13-B1#02-C6-D6SS-E1E#02-E60S



P14-B1#01-CA2-D6SS-E1L#01-E60-E11

NARROW AISLE LIBERATOR  
HAND TRUCK MAKES IT EASY TO  
DELIVER PRODUCT IN TIGHT SPACE  
APPLICATIONS



A12E-B10-CA1-D12-NA

LIBERATOR HAND TRUCK  
WITH SLIDING KEG HOOK GIVES  
THE FLEXIBILITY TO DELIVER ANY  
SIZE KEG



A10-B5K-C2-D6S-E1E

A1-B1-C6-D5-E1L-E60



MODULAR ALUMINUM HAND TRUCKS GIVE  
THE FLEXIBILITY TO ADAPT TO ANY  
PRODUCT MIX

## HEAVY DUTY BULK DELIVERY CART



FHE-1860-204-HD10

- > PRELOAD EACH ORDER AT THE WAREHOUSE TO DELIVER MORE PRODUCT IN A SHORTER AMOUNT OF TIME
- > LESS TRIPS IN AND OUT AND NO DOWN STACKING IN THE CUSTOMERS PARKING LOT

## ALUMINUM CURB RAMP



CRP2618-SY

- > MAKES IT EASY TO GET A LOADED HAND TRUCK OVER CURBS
- > OPTIONAL SAFETY YELLOW MAKES CURB RAMP MORE VISIBLE



GRIP SLEEVE PROTECTS AND PROVIDES COMFORT FROM BARE METAL

FRAME END CAPS PROTECT PRODUCT AND WALLS FROM METAL EDGES

STAIR CLIMBER ASSISTS IN SLIDING THE LOAD UP STAIRS. HEAVY DUTY WEAR STRIPS PROTECT STAIRS FROM BARE METAL

A13-B1-C6-D5-E1L



A14-B2-C6-D5G-E1EB-E46E-E47E-E60-BDC

**B&P Disc Brake Trucks provide:**

- > **The most advanced brake system ever developed. Provides exceptional stopping power, even in adverse conditions.**
- > **Single cable design ensures equal braking on both sides.**
- > **Superior strength in a simplistic design for ease of maintenance.**
- > **Brake cable eliminates bending issues found with steel rods.**
- > **Exclusive powder coating process of steel parts protects better and lasts longer than zinc plating.**
- > **New ergonomic stair climber design allows drivers to keep their back straighter when maneuvering stairs.**
- > **Optional spring loaded pull out bar is much easier than using your foot.**
- > **Compatible with most handle styles . Other options like wheel guards, wings and powder coated components are available.**
- > **B&P's exclusive 2 year warranty!**



**B&P Tread Brake Trucks provide:**

- > Industry's best performing tread brake truck, even with wet tires.
- > Square brake shoes last longer and won't tear up tires.
- > Steel equalizer bar and single cable design ensures equal braking on both sides.
- > Black powder coated steel parts - protects better and lasts longer than zinc plate.
- > Brake cable eliminates bending issues found with steel rods.
- > Compatible with most handle styles and other available accessories.
- > B&P's exclusive 2 yr. Warranty!

Shown with optional E60S extension which is designed for comfort and prevents small boxes falling through



A5-B2-C6-D5-E1L-E13-BDC

WINGS INCREASE OVERALL WIDTH BY 4" TO ACCOMMODATE WIDER PRODUCT

CENTER STRAP PREVENTS SMALLER PRODUCT FROM FALLING THROUGH

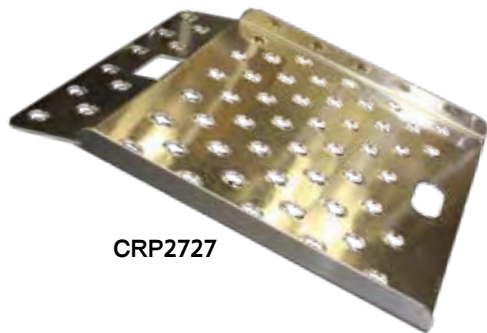


DISC BRAKE HAND TRUCKS PROVIDE TOTAL STOPPING POWER (UP TO THE RATED CAPACITY)

A11-B1-C6-D5-E60-E1EB-BDC



A13-B2-C6-D6SS-E1E-E47E-E60S-BTC



CRP2727

### ALUMINUM CURB RAMP

- > PUNCHED DESIGN PROVIDES SUPERIOR TRACTION AND LET MUD, SNOW AND DEBRIS FALL THROUGH



TUBULAR FRAME  
EXTENSIONS ARE  
MORE  
COMFORTABLE  
AND EASIER ON  
HANDS

A11-B2-C6-D5-E60S-E1E-E47E

A8S-B6-C2-D5-E1E WITH 8218-001



LIBERATOR HAND TRUCK WITH  
STORAGE BAG

ERGO STAIR CLIMBERS VERTICAL GEOMETRY MAKE IT  
EASIER TO GO UP STAIRS



### PUNCHED WALK RAMP

> UNIQUE PUNCHED DESIGN  
PROVIDES SUPERIOR TRACTION



PRP-3806-A

### LIBERATOR HEAVY DUTY CONVERTIBLE HAND TRUCK

12" AND 18" WIDE  
SOLID DECKS HOLD  
MORE PRODUCT  
AND KEEP SMALLER  
ITEMS FROM FALLING  
THROUGH



A1-B81-C6-D6SS-E49

TURN YOUR 600 LB CAPACITY HAND TRUCK INTO A  
1200 LB CAPACITY PLATFORM TRUCK IN SECONDS

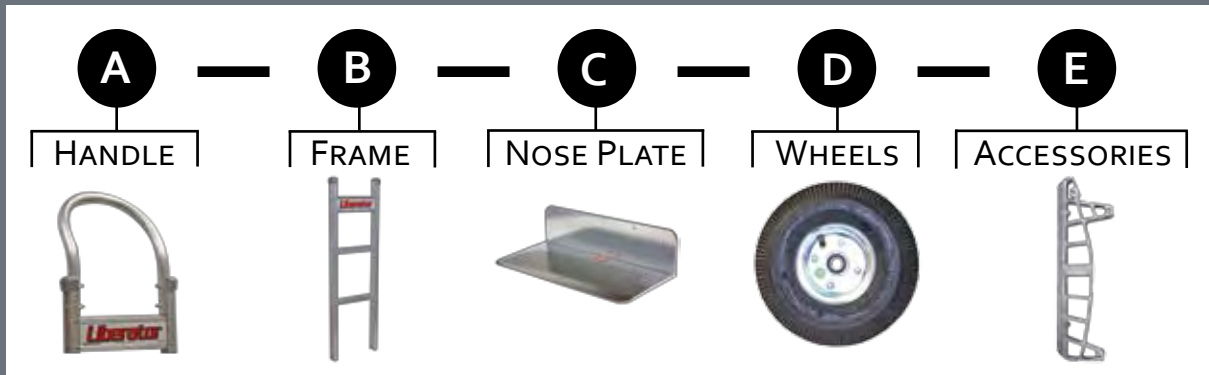


A2-B1#01-CA2-D15-E60

> FRAME EXTENSIONS ACCOMMODATE  
DIFFERENT DRIVER HEIGHTS AND  
ALLOW STACKING MORE PRODUCT

## >>BUILD A LIBERATOR HAND TRUCK

Designing your custom Liberator hand truck is easy. Select one component from each section to create a hand truck specific for your needs. Visit us online for more selections. Build your custom part number as shown below. Example: A1-B1-C6-D5-E1L



### A > HANDLE

#### Loop Handles



P/N	Description	Overall Height
<b>A1</b>	Standard Loop	50"
<b>A13</b>	Standard Loop with Comfort Sleeve	50"
<b>A2</b>	Standard Loop with U-Brace	50"
<b>A14</b>	Standard Loop w/U-Brace and Comfort Sleeve	50"
<b>A37</b>	Standard Loop, Square Top w/Comfort Sleeve	50"

Visit us online for more selections.

#### Vertical Grip Handles



P/N	Description	Overall Height
<b>A7</b>	Straight Loop, Vertical Grip	52"
<b>A10</b>	Straight Loop, Vertical Grip for Curved Frame	52"
<b>A8</b>	Straight Loop, Vertical Grip at 52"	60"
<b>A9</b>	Straight Loop, Vertical Grip at 52"	68"
<b>A25</b>	Straight Loop, Vertical Grip at 52", Curved Frame	60"

Add "S" to the end of the P/N to add the Comfort Sleeve to Vertical Grip Handles

## Double Grip

A11 with  
E60S  
Accessory



P/N	Description	Overall Height
A11	Standard Double Grip with U-Brace	48"

### Accessories

P/N	Description
E60S	Tubular Frame Extension, 60" Overall Height, 2 Straps
E68S	Tubular Frame Extension, 68" Overall Height, 2 Straps

## Double Vertical Grip

A31S  
A56S

A57S



P/N	Description	Overall Height
A16	Double Grip, Loops at 43-5/8"	60"
A31S	Straight Back Double Vertical Loops at 43-5/8"	55"
A56S	Straight Back Double Vertical Loops at 43-5/8"	62"
A57S	Straight Back Double Vertical Loops at 43- 5/8", Center Vertical Bar	62"

## Single Grip

A3  
A4  
A5  
A6

A12



P/N	Description	Overall Height
A3	Straight Loop, Single Ergo Grip at 46"	52"
A4	Straight Loop, Single Ergo Grip at 46"	55"
A5	Straight Loop, Single Ergo Grip at 46"	60"
A6	Straight Loop, Single Ergo Grip at 46"	68"
A12	Straight Loop, Single Ergo Grip	52"

Visit us online for more selections.



## >>BUILD A LIBERATOR HAND TRUCK

### B > FRAME

To order a colored frame add to your part number:

- #01 for Blue

- #02 for Red

#### Straight Back



P/N	Description
<b>B1</b>	Standard Straight Back, No Strap
<b>B2</b>	Straight Back with 1 Vertical Strap
<b>B3</b>	Straight Back with 2 Vertical Straps
<b>B10</b>	Straight Back, No Logo Channel, No Striping

#### Curved Back



P/N	Description
<b>B4</b>	All Aluminum Curved Back, with 1 Strap
<b>B5</b>	All Aluminum Curved Back, No Strap
<b>B5K</b>	All Aluminum Curved Back with Sliding Keg Hook

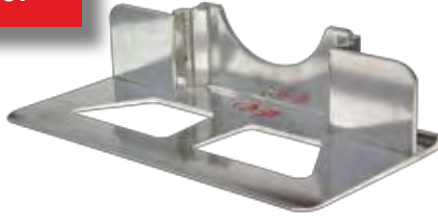
#### Straight-Curved Combo



P/N	Description
<b>B6</b>	Combination Back, 2 Straight, 1 Curved
<b>B7</b>	Combination Back, 1 Straight, 2 Curved

**Extruded Aluminum  
Recessed Heel**

C2



P/N	Description	Width x Depth
C1	Recessed Heel w/cutouts, Extruded Aluminum	14" x 7- 1/2"
C19	Recessed Heel, Extruded Aluminum	14" x 7- 1/2"
C7	Recessed Heel w/ Cutouts, Extruded Aluminum	14" x 10- 1/2"
C2	Recessed Heel w/ Cutouts, Extruded Aluminum	18" x 7- 1/2"
C20	Recessed Heel , Extruded Aluminum	18" x 7- 1/2"
C15	Recessed Heel w/ Cutouts, Extruded Aluminum	18" x 10- 1/2"

**Extruded Aluminum  
Front Mount**

C6

*Most Popular Nose Plate*

P/N	Description	Width x Depth
C16	Front Mount, Extruded Aluminum	14" x 7- 1/2"
C12	Front Mount w/Cutouts, Extruded Aluminum	14" x 7- 1/2"
C4	Front Mount, Extruded Aluminum	14" x 9"
C8	Front Mount, Extruded Aluminum	16" x 12"
C17	Front Mount, Extruded Aluminum	18" x 7- 1/2"
C13	Front Mount w/Cutouts, Extruded Aluminum	18" x 7- 1/2"
C6	Front Mount, Extruded Aluminum	18" x 9"
C26	Front Mount, w/ Cutouts, Extruded Aluminum	18' x 9"
C14	Front Mount, Extruded Aluminum	18" x 12"
C10	Front Mount, Extruded Aluminum	20" x 9"
C9	Front Mount, Extruded Aluminum	20" x 12"

**Cast Aluminum  
Recessed Heel**

CA2



P/N	Description	Width x Depth
CA1	Recessed Heel w/ Cutouts, Cast	14" x 7- 1/2"
CA3	Recessed Heel w/ Cutouts, Cast	14" x 12"
CA2	Recessed Heel w/ Cutouts, Cast	18" x 7- 1/2"

**Extruded Aluminum  
Rear Mount**

C3



P/N	Description	Width x Depth
C3	Rear Mount, Extruded Aluminum	14" x 7- 1/2"
C5	Rear Mount, Extruded Aluminum	18" x 7- 1/2"

**Steel Recessed  
or Front Mount**

C29



P/N	Description	Width x Depth
C29	Recessed Mount, Steel	14" x 7- 1/2"
C28	Recessed Mount, Steel	18" x 7- 1/2"
C21	Front Mount, Steel	14" x 9"
C22	Front Mount, Steel	18" x 9"

Visit us online for more selections.

## >>BUILD A LIBERATOR HAND TRUCK

### D > WHEELS

For more wheel selections visit our website [www.bpmfg.com](http://www.bpmfg.com)

#### Pneumatic



Features:

- > **D5G non-marking**
- > Heavy steel hub
- > Four ply construction
- > Precision sealed bearings
- > D5F has a pneumatic feel but can't go flat

P/N	Description	Diameter x Width	Capacity	Weight
<b>D5</b>	4 Ply Pneumatic, 2 Pc. Steel Hub, Precision Bearings	10" x 3- 1/2"	600 lb.	4.6 lb
<b>D5F</b>	Foam Filled- Can't Go Flat	10" x 3- 1/2"	600 lb.	7 lb
<b>D5G</b>	4 Ply Pneumatic, 2 Pc. Steel Hub, Precision Bearings - Gary color, non-marking	10" x 3- 1/2"	600 lb.	4.6 lb

#### Balloon Cushion



Features:

- > **Non-marking**
- > Lightweight poly hub
- > Poly tread compound
- > Precision sealed bearings
- > **Two year warranty**

P/N	Description	Diameter x Width	Capacity	Weight
<b>D15</b>	Balloon Cushion, Poly Hub, Precision Bearings, Dark Gray	10" x 2- 1/8"	600 lb.	2.2 lb
<b>D16</b>	Balloon Cushion, Poly Hub, Precision Bearings, Dark Gray	8" x 2- 1/8"	600 lb.	1.5 lb

#### Carefree®



Features:

- > **Non-marking**
- > Open/closed cell construction
- > One piece steel hub
- > **Two year warranty**
- > Precision sealed bearings

P/N	Description	Diameter x Width	Capacity	Weight
<b>D6</b>	Carefree, No Flat Solid Foam, Non -marking	10" x 3"	600 lb.	4.5 lb

#### Carefree®



Features:

- > **Non-marking**
- > Our Exclusive hand truck tire
- > **Two year warranty**
- > Lightweight poly hub
- > Can't go flat
- > Durable and lightweight

P/N	Description	Diameter x Width	Capacity	Weight
<b>D6SS</b>	Carefree, Poly tread, Non-marking	10" x 3"	600 lb.	3.2 lb

#### Performance TPR



Features:

- > **Non-marking**
- > Recessed bearing
- > Dark Gray
- > Durable poly hub
- > Precision sealed bearings
- > For short axles

P/N	Description	Diameter x Width	Capacity	Weight
<b>D1</b>	High Performance, Non-marking, Gray	8" x 2"	600 lb.	2 lb

#### Rubber



Features:

- > Molded on rubber
- > Light weight
- > For short axles

P/N	Description	Diameter x Width	Capacity	Weight
<b>D12</b>	Rubber on Aluminum, Offset Hub	8" x 1-5/8"	600 lb.	5 lb

### Features:

- > More comfortable than channel designs
- > Heat treated for twice the strength
- > No need for sleeves
- > 2" wide straps keep products from falling through
- > Fits A1, A2, A11 and A37 handles and competitors hand trucks

E60S

E60SL



(Shown with A11 Handle)



(Shown with A37 Handle)

P/N	Description
<b>E60S</b>	Tubular Frame Extension, 60" Overall Height, 2 Straps
<b>E60SL</b>	Tubular Frame Extension, 60" Overall Height, 2 Straps, 1 Diagonal Loop
<b>E68S</b>	Tubular Frame Extension, 68" Overall Height, 2 Straps
<b>E68SL</b>	Tubular Frame Extension, 68" Overall Height, 2 Straps, 1 Diagonal Loop

### Frame Extensions



E45



E52



E11



E60

P/N	Description
<b>E45</b>	Frame Extension, 45" Overall Height
<b>E52</b>	Frame Extension, 52" Overall Height
<b>E55</b>	Frame Extension, 55" Overall Height
<b>E60</b>	Frame Extension, 60" Overall Height
<b>E68</b>	Frame Extension, 68" Overall Height
<b>E11</b>	Frame Extension Foam Sleeve



P/N	Description
<b>E4F or E4R</b>	Tubular Folding Nose, 44"
<b>E5F or E5R</b>	Tubular Folding Nose, 36"
<b>E6F or E6R</b>	Tubular Folding Nose, 30"

Order "F" for use with front mount nose plates  
Order "R" for use with recessed heel or rear mount nose plates  
(110 lb. capacity)



P/N	Description
<b>E2F or E2R</b>	Full Channel Extruded Folding Nose, 20"
<b>E3F or E3R</b>	Full Channel Extruded, Folding Nose, 30"

Order "F" for use with front mount nose plates  
Order "R" for use with recessed heel or rear mount nose plates  
(300 lb capacity)

Visit us online for more selections.

## Stair Climbers

### Features:

- > "Ergo" stair climbers vertical geometry make it easier to go up and down stairs
- > High Strength extruded aluminum with 15" reversible wear strip
- > Built in mounting holes for E46E kick bar and E47E pull back bar



P/N	Description
<b>E1EB</b>	Extruded Aluminum "Ergo" Stair Climbers for use with disc brakes
<b>E1E</b>	Extruded Aluminum "Ergo" Stair Climbers

### Features:

- > High Strength extruded Aluminum with thick extra long, reversible wear strip
- > Kit includes 2 stair climbers and hardware
- > Two year warranty



P/N	Description
<b>E1L</b>	Extruded Aluminum Stair Climbers

### Features:

- > Fits B&P trucks as well as most competitors
- > Kit includes 2 stair climbers and hardware
- > One year warranty



P/N	Description
<b>E1C</b>	Cast Aluminum Stair Climbers

## Stair Climber Accessories

### Features:

- > Pull back bar is spring loaded, retracts back out of the way after pulling the hand truck out from under the load



P/N	Description
<b>E47</b>	Pull Back Bar for E1L Stair Climbers
<b>E47E</b>	Pull Back Bar for E1E "Ergo" Stair Climbers



P/N	Description
<b>E29</b>	Pull Bar for E1L, E1E Stair Climbers - .63 Dia Aluminum w/Red Plastic Sleeve



P/N	Description
<b>E46</b>	Steel Kick Bar for E1L Stair Climbers w/10" Wheels - .63" Dia
<b>E26</b>	Steel Kick Bar for E1L Stair Climbers w/8" Wheels - .63: Dia
<b>E13</b>	Aluminum Kick Bar for E1L Stair Climbers w/10" Wheels - 1.49" Dia
<b>E46E</b>	Steel Kick Bar for E1E "Ergo" Stair Climbers



**Features:**

- > 4th wheel attachment takes the load off the operator
- > Latch keeps the 4th wheel up and out of the way when not in use
- > 600 lb capacity
- > Optional latch and pin system locks the 4th wheel to prevent accidental closing
- > Uses smooth rolling TPR casters



P/N	Description
<b>E37</b>	Fourth Wheel Attachment

(Not compatible with stair climbers or convertible hand trucks)

**Features:**

- > Adds 4" to hand truck width

**Accessories**



P/N	Description
<b>E30</b>	Frame Wings, 34" Long
<b>E31</b>	Frame Wings, 45" Long

(Not compatible with E1C stair climbers)  
Add "C" to part number for disc brake trucks



P/N	Description
<b>E8</b>	Wheel Guards, 7.38" H x 4" W
<b>E8L</b>	Wheel Guards, 12" H x 4" W



8218-001



8218-002

P/N	Description
<b>8218-001</b>	Hand Truck Accessory Bag 12" W x 18" H x 2" D
<b>8218-002</b>	Hand Truck Accessory Bag 12" W x 18" H x 3" D



P/N	Description
<b>E9</b>	Keg Hook for Sankey Style 1/2 Barrel

### >> DISC BRAKES

#### Double Disc Brake Features:

- > Wheel, extruded hub and brake rotor are bolted together as a single piece
- > "C" bracket allows for fast removal of calipers
- > Wheel changes don't require total disassembly
- > "V" bar applies equal pressure to both calipers for even braking action
- > D5, D5F, D5G, and D6 style wheels

P/N	Description
BDC	Double Disc Brakes

Build your custom part number and add -BDC to the end to add disc brakes to your hand truck

Single Grip  
Handle Brake Lever  
with Disc Brakes



A5-B1-C6-D5-E1EB-E8D-BDC

Vertical Loop  
Handle Brake Lever  
with Disc Brakes



A8-B2-C6-D5-E1EB-E46E-E47E-BDC



#### Brake Lever Features:

- > Better ergonomics for increased operator safety and efficiency
- > Provides more leverage for better braking action
- > Steel stops keep the brake lever from sagging over time
- > Cable system is vinyl coated and threaded on the bottom to provide ease of adjustment

**Tread Brake Features:**

- > Brake shoes provide more mechanical advantage for better braking
- > Powder coated for durability and corrosion resistance
- > Compatible with all wheels

P/N	Description
BTC	Tread Brakes

Build your custom part number and add -BTC to the end to add tread brakes to your hand truck

Loop  
Handle Brake Lever  
with Tread Brakes



A14-B1#02-C6-D15-E1E-E60-E11-BTC

Double Grip  
Handle Brake Lever  
with Tread Brakes



A11-B1-C6-D6SS-E1L-E60-BTC

**Brake Lever Features:**

- > Better ergonomics for increased operator safety and efficiency
- > Provides more leverage for better braking action
- > Steel stops keep the brake lever from sagging over time
- > Cable system is vinyl coated and threaded on the bottom to provide ease of adjustment

To add a disc or tread brake kit to your existing Liberator hand truck, consult the factory

## >> LIBERATOR HEAVY DUTY CONVERTIBLE HAND TRUCKS

> Start your custom part number with a Senior or Junior frame below and complete it with a nose plate, wheels and accessories

### Senior



A1-B88-C6-D5

A13-B81-C6-D5

### Junior



B70-CA2-D5

### SPECIFICATIONS

	Senior	Junior
Overall Width	20"	20"
Frame Width	12"	12"
Overall Length (Platform Mode)	56"	43"
Height as a Hand Truck	61- 1/2"	52"
Height as a Platform Truck	46"	41"
Platform Bed Length	51- 1/2"	38- 1/4"
Platform Height from the Floor	11"	11"
Weight	47 lbs	45 lbs
Casters	5" Balloon Swivel Stem Casters	5" Balloon Swivel Stem Casters

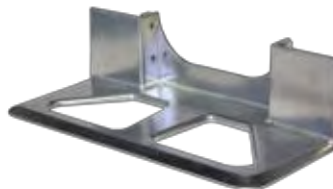


P/N	Handle	Frame
A1-B81	Loop Handle	Senior Convertible Frame with 5 Cross members
A13-B81	Loop Handle with Comfort Sleeve	Senior Convertible Frame with 5 Cross members
A1-B88F	Loop Handle	Senior Convertible Frame with 5 Cross members and center strap
A13-B88F	Loop Handle with Comfort Sleeve	Senior Convertible Frame with 5 Cross members and center strap
B70	Double Ergo Grip Handle	Junior Convertible Frame with 4 Cross members

C2



CA1  
CA2



C6



P/N	Description	Width x Depth
C2	Recessed Heel w/ Cutouts, Extruded Aluminum	18" x 7- 1/2"
CA1	Recessed Heel w/ Cutouts, Cast	14" x 7- 1/2"
CA2	Recessed Heel w/ Cutouts, Cast	18" x 7- 1/2"
C6	Front Mount, Extruded Aluminum	18" x 9"



One piece solid release bar with minimal moving parts for maximum reliability

Visit us online for more selections.



## >> WHEELS & ACCESSORIES



P/N	Description	Diameter x Width	Capacity	Weight
<b>D5</b>	4 Ply Pneumatic, 2 Pc. Steel Hub, Precision Sealed Bearings	10" x 3- 1/2"	600 lb.	4.6 lb
<b>D6SS</b>	Super Carefree, No Flat Solid Foam, Non-marking	10" x 3"	600 lb.	3.2 lb
<b>D6</b>	Carefree, No Flat Solid Foam, Non -marking	10" x 3"	600 lb.	4.5 lb
<b>D15</b>	Balloon Cushion, Poly Hub, Precision Sealed Bearings	10" x 2- 1/8"	600 lb.	2.2 lb



P/N	Description
<b>E5F or E5R</b>	Tubular Folding Nose, 36"
<b>E6F or E6R</b>	Tubular Folding Nose, 30"
<b>E2F or E2R</b>	Full Channel Extruded Folding Nose, 20"
<b>E3F or E3R</b>	Full Channel Extruded, Folding Nose, 30"

Order "F" for use with front mount nose plates  
Order "R" for use with recessed heel nose plates



P/N	Description
<b>E32</b>	Frame Wings, Senior, 2.5" Wide, Overall Width 17"
<b>E32J</b>	Frame Wings, Junior, 2" Wide, Overall Width 16"



P/N	Description
<b>E22L</b>	Solid Deck, 12", Junior, Snap On
<b>E24L</b>	Solid Deck, 12", Junior, Permanent
<b>E23L</b>	Solid Deck, 12", Senior, Snap On
<b>E25L</b>	Solid Deck, 12", Senior, Permanent
<b>E50</b>	Solid Deck, 18", Senior, Snap On
<b>E49</b>	Solid Deck, 18", Senior, Permanent

Visit us online for more selections.



## >> HEAVY DUTY POWERED CONVERTIBLE HAND TRUCKS

### Features:

- > Unique, rugged, patent-pending drive system
- > Weighs less than 65 lbs. complete
- > Maintains standard frame load capacities
- > Easy to read battery level
- > E-stop doubles as a regenerative brake control
- > Variable speed control
- > Easy-dock charger - charges between stops (optional)
- > Cord stays out of the way in 2 and 4 wheel mode
- > 24 volt system with 12 volt charging

### Benefits to the User:

- > Reduces operator strain, fatigue, and injury
- > Powers loads up to 600/1200 lbs.
- > Power-assisted on upward inclines and regenerative braking slows load on downhill
- > Allows for larger and fewer trips - saving time and energy
- > Operates like a standard hand truck

### Perfect For:

- > Moving heavy loads
- > Going long distances
- > Working with inclines



**To add power to your convertible hand truck please consult the factory:  
[www.bpmfg.com](http://www.bpmfg.com) / 800-334-7141**

## >> STANDARD CAPACITY S-SERIES LIBERATOR HAND TRUCKS

### Features:

- > High quality and heavy duty
- > 500 lb capacity

S-500



S-502



S-503



P/N	Handle	Frame	Nose Plate	Wheels	Weight
<b>S-500</b>	Loop Handle - A1	Straight Frame- B10	14" x 7-1/2", Front Mount w/Cutouts, Extruded Aluminum - C12	8" Pro-Flex Balloon Cushion - D16	17 lbs
<b>S-502</b>	Loop Handle - A1	Straight Frame - B10	14" x 7-1/2", Front Mount w/Cutouts, Extruded Aluminum - C12	10" Pro-Flex Balloon Cushion - D15	19 lbs
<b>S-503</b>	Double Ergo Grip w/U-brace Handle - A11	Straight Frame - B10	18" x 71/2", Front Mount w/Cutouts, Extruded Aluminum - C13	10" Pneumatic with Precision Sealed Bearings - D5	25 lbs

### Features:

- > High quality and heavy duty
- > 500 lb capacity hand truck
- > 1,000 lb capacity platform truck

### Standard Capacity Convertibles

Junior



SJR



SSR

Senior



P/N	Handle	Frame	Nose Plate	Wheels	Weight
<b>SSR</b>	Loop Handle	Senior Lightweight Convertible Frame w/Logo Channel	18" x 7-1/2", Front Mount, Extruded Aluminum - C17	10" Pneumatic with Precision Sealed Bearings - D5	46 lbs
<b>SJR</b>	Double Ergo Grip Handle	Junior Lightweight Convertible Frame	18" x 7-1/2", Front Mount, Extruded Aluminum - C17	10" Pneumatic with Precision Sealed Bearings - D5	42 lbs

## >> NARROW AISLE HAND TRUCKS

### Features:

- > Speciality designed brackets move each wheel in 1.5"
- > Fits all Liberator hand trucks
- > Fits all 8" and 10" wheels
- > Optional extruded aluminum stair climbers
- > 14" wide and only 18 Lbs

P/N	Description
NA	Narrow Aisle Brackets

Build your custom part number and add -NA to the end to add narrow aisle brackets to your hand truck



P/N	Description
E44E	Extruded Aluminum Stair Climbers, for Narrow Aisle Hand Truck



A12E-B10-CA1-D12-NA

## >> "THREE WAY" LIBERATOR HAND TRUCKS

### Features:

- > Securely locks in any of the three positions for safety
- > Cast 18" x 7-1/2" nose plate
- > 10" Pneumatic wheels with precision bearings
- > Integrated 27" folding nose for large loads stores out of the way

P/N	Description
B60-CA2-D5	"Three Way" Liberator Hand Truck



SPECIFICATIONS	
Height in 2 Wheel Position	52"
Height in 4 Wheel Position	42"
Deck Size	51" x 21"
Deck Height	11"
Capacity in 2 Wheel Position	600 lbs
Capacity in 4 Wheel Position	900 lbs
Weight	48 lbs

**Features:**

- > Carpeted back panel
- > Loop handle with 52" extension
- > Garment hanger hook
- > Cast 14" x 7-1/2" nose plate
- > 8" Wheels
- > 30" Carpeted folding nose, 300 lb capacity

P/N	Description
A1-B1-CA1-D12-E52-E3RC-CB-E16	Luggage Handler Hand Truck

## &gt;&gt; LUGGAGE PLATFORM TRUCKS

**Features:**

- > Carpeted Platform
- > Removable 29-1/2" high handles with 18" tall panels
- > Protective rubber bumper installed all around perimeter of truck
- > 8" x 2" TPR non-marking casters, 2 swivel, 2 rigid



P/N	Description
PT-3060S-165-165-850-C-310	Carpeted Deck Platform Truck with Bumper

## >> SNACK FOOD DELIVERY HAND TRUCK

### Features:

- > Lightweight aluminum construction
- > Extra Long 51" skids allow truck to easily slide out of the delivery vehicle
- > Folding nose for bulky packages
- > Two year warranty
- > Rear mount, extruded aluminium 14" x 10-1/2" nose plate (C31)
- > 8" Proflex premium balloon cushion wheels (D16)



P/N	Description
HTA-16	Snack Food Delivery Hand Truck

### SPECIFICATIONS

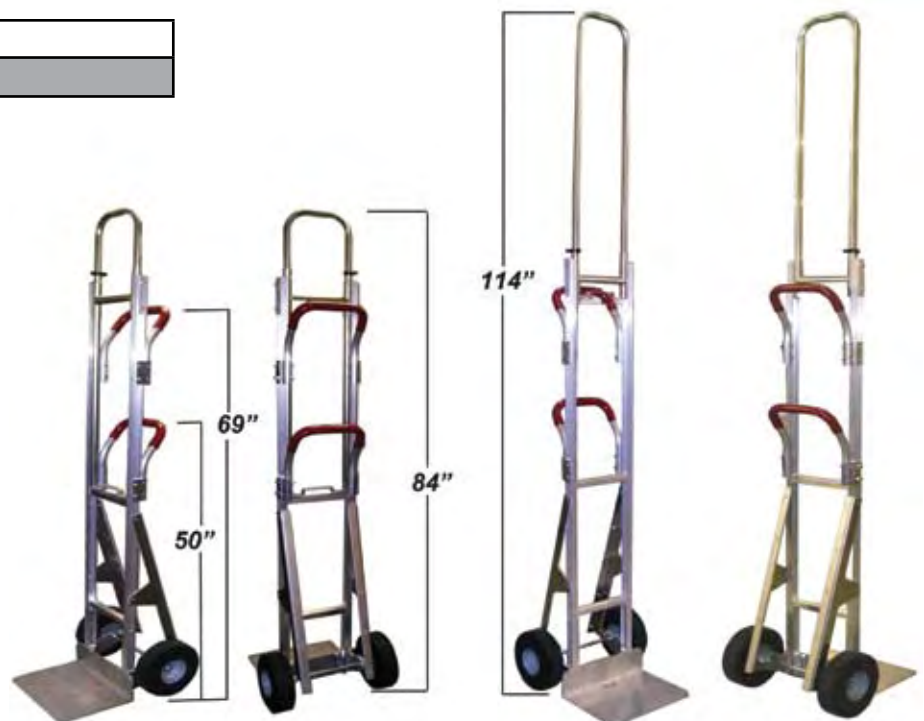
Overall Height	68"
Width	14"
Folding Nose Length	34"
Weight	28 lbs
Capacity (folding nose)	80 lbs
Capacity (2 wheel)	600 lbs

## >> TELESCOPING BIN DELIVERY HAND TRUCKS

P/N	Description
HTA-13	Telescoping Bin Delivery Hand Truck

### Features:

- > Telescopes from 84" to 114"
- > Seat post clamps keep the extension where you want it
- > Skids allow truck to easily slide out from the delivery vehicle
- > Extruded aluminum 16" x 12" nose plate
- > No flat wheels
- > Aluminum skids with steel wear strips





**Features:**

- > Lightweight construction
- > 36" Folding nose keeps boxes in place and folds up for transportation and storage
- > Latches keep both the handle and the folding nose in upright position
- > Rear mount, extruded aluminium 14" x 10-1/2" nose plate (C31)
- > 8" Proflex premium balloon cushion wheels (D16)
- > 5" x 1-1/4" swivel stem casters provide a smooth ride and long life



P/N	Description
HTA-14	Folding Snack Hand Truck

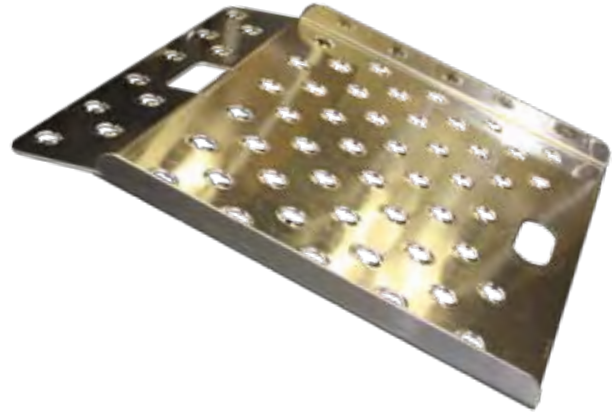


SPECIFICATIONS	
Overall Height	73"
Width	14"
Bed Length	66"
Handle Height	38"
Folding Nose Length	36"
Folding Nose Height	46"
Weight	35 lbs
Capacity (folding nose)	80 lbs
Capacity (4 wheel)	200 lbs

## >> ALUMINUM CURB RAMPS

### Features:

- > Our exclusive process punches holes in the material, then raises the edges of the cutouts for superior traction
- > Exceptionally lightweight
- > Won't collect ice, mud, snow, or debris
- > Hand slot doubles as a stop



P/N	Width x Length	Capacity	Weight
<b>CRP2618</b>	26" x 18"	750 lbs	8 lbs
<b>CRP2727</b>	27" x 27"	750 lbs	13 lbs
<b>CRP2736</b>	27" x 36"	750 lbs	17.5 lbs
<b>CRP3030</b>	30" x 30"	750 lbs	15 lbs
<b>CRP2745</b>	27" x 45"	500 lbs	22 lbs



P/N	Width x Length	Capacity	Weight
<b>CRP2618-SY</b>	26" x 18"	750 lbs	8 lbs
<b>CRP2727-SY</b>	27" x 27"	750 lbs	13 lbs
<b>CRP2736-SY</b>	27" x 36"	750 lbs	17.5 lbs
<b>CRP3030-SY</b>	30" x 30"	750 lbs	15 lbs

### Features:

- > Wedge design curb ramp features the same punched design for traction
- > Sides folded down keep the ramp in place and allows more usable width



P/N	Width x Length	Capacity	Weight
<b>CRW2224</b>	22" x 24"	600 lbs	6 lbs
<b>CRW2224-SY</b>	22" x 24"	600 lbs	6 lbs
<b>CRW2724</b>	27" x 24"	750 lbs	12 lbs
<b>CRW2724-SY</b>	27" x 24"	750 lbs	12 lbs

-SY denotes powder coated safety yellow

## Apron Hand Truck Dock Board

### Features:

- > A lightweight solution for dock-to-truck/truck-to-truck applications
- > Features our exclusive punched design providing excellent traction while preventing buildup of mud, slush, ice or debris
- > Curbs provide an increased margin of safety
- > Steel bolt-on legs



P/N	Width x Length	Capacity	Leg Length	Max. Height Difference	Weight
AHTD-3036	30"x 36"	800 lbs	7"	5"	27 lbs
AHTD-3048	30" x 48"	800 lbs	9"	7"	35 lbs

### Features:

- > Special dairy truck design with 1" lip on front made to fit down into drain opening in doorway on back of truck to firmly hold it in place
- > Engineered bend compensates for height differences between truck and dock
- > High traction safety tread plate surface
- > Integrated hand slot for easy and safe maneuvering
- > High-strength extruded aluminum

## Dairy Hand Truck Dock Boards



P/N	Width x Length	Capacity	Weight
HTDB-3048	30" x 48"	800 lbs	30 lbs

## Walk Boards

### Features:

- > Lightweight, one piece design is resistant to bending and fatigue
- > Ideal for spanning between truck and loading dock
- > Punched design won't collect ice, mud, snow or debris
- > Bolt on hooks secure to truck bed



P/N	Width x Length	Capacity	Weight
LWB2448	24" x 48"	750 lbs	39 lbs

**Features:**

- > Heavy duty deck with double stringers
- > Fully welded handle pockets
- > Standard 8" x 2" urethane center wheels with (4) 6" x 2" TPR square tread swivel casters
- > Center brake system lock both center wheels for loading and unloading
- > Brake can be actuated from all 4 sides
- > Heavy duty heat treated handles



FHE-1860-204-HD10



HD-10 caster configuration standard. See other configurations below.

P/N	Description	Center Wheels	Casters	Width x Length
<b>FHE-1854-203-HD10</b>	Heavy Duty Bulk Delivery Cart, 2 round handles	8" Polyurethane	6" Corner Casters	18" x 54"
<b>FHE-1857-203-HD10</b>	Heavy Duty Bulk Delivery Cart, 2 round handles	8" Polyurethane	6" Corner Casters	18" x 57"
<b>FHE-1860-203-HD10</b>	Heavy Duty Bulk Delivery Cart, 2 round handles	8" Polyurethane	6" Corner Casters	18" x 60"
<b>FHE-1861-203-HD10</b>	Heavy Duty Bulk Delivery Cart, 2 round handles	8" Polyurethane	6" Corner Casters	18" x 61"
<b>FHE-2460-203-HD10</b>	Heavy Duty Bulk Delivery Cart, 2 round handles	8" Polyurethane	6" Corner Casters	24" x 60"

## Accessories

P/N	Description
<b>CB</b>	Center Brake System

Add -CB to the end of your part number to add brakes

P/N	Description
<b>204</b>	Containment Curtain Barrel Screws

Replace -203 with -204 in the p/n to add containment curtain barrel screws

### Additional caster configurations

P/N	Center Wheels	Casters
<b>HD-1</b>	8" TPR, round tread, poly core	8" round tread swivel casters
<b>HD-2</b>	8" TPR, round tread, poly core	8" pneumatic swivel casters
<b>HD-3</b>	8" Mold on rubber, square tread, alum core	6" square tread swivel casters
<b>HD-4</b>	8" TPR, square tread, poly core center	6" square tread swivel casters
<b>HD-5</b>	8" TPR, square tread, poly core center	8" pneumatic swivel casters
<b>HD-6</b>	8" Mold on rubber, square tread, alum core	8" pneumatic swivel casters
<b>HD-7</b>	6" TPR, square tread, poly core	6" square tread swivel casters
<b>HD-8*</b>	8" TPR, square tread, poly core	6" square tread swivel casters
<b>HD-9</b>	8" TPR, round tread, poly core	6" square tread swivel casters

\*steel under structure, Walkie Rider compatible

Replace the HD number to select a different wheel configuration





## >> UNIVERSAL BULK DELIVERY CARTS

### Features:

- > Standard 8" x 2" urethane center casters with (4) 8" x 2" TPR casters
- > Allows 2 carts to sit side by side on walkie riders or forklifts
- > Square pocket design allows for interchangeability
- > Stronger ergonomic handles

P/N	Description	Width x Length
FHM-1	Universal Bulk Delivery Cart	18" x 60"

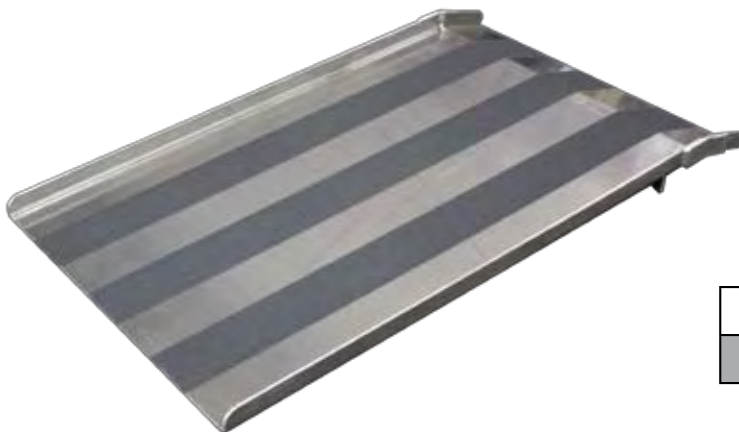
For replacement components visit our web site [www.bpmfg.com](http://www.bpmfg.com)



## >> BULK CART CURB RAMPS

### Features:

- > Curb ramp for use with Bulk Delivery Carts
- > 1/4" thick smooth plate with non-skid tape



P/N	Width x Length	Capacity	Weight
NCR2745	27" x 45"	1,400 lbs	34 lbs

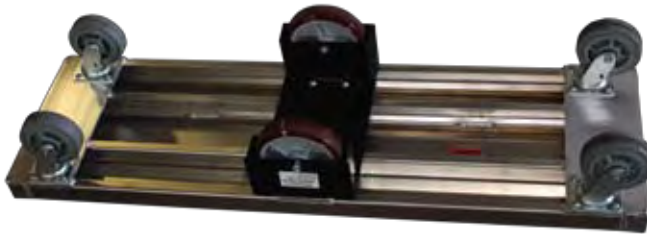
**Features:**

- > Two handles with two crossbars and one vertical strap
- > Standard 8" x 2" urethane center wheels with (4) 6" x 2" TPR square tread swivel casters
- > Optional removable shelf
- > Optional center brake
- > 1200 lb capacity

**FHE-2460-217-HD10-SH-CB**

P/N	Description	Width x Length
<b>FHE-2460-217-HD10</b>	Warehouse Cart	24" x 60"
<b>FHE-2460-217-HD10-SH</b>	Warehouse Cart w/Shelf	24" x 60"
<b>FHE-2460-217-HD10-CB</b>	Warehouse Cart w/Center Brake	24" x 60"
<b>FHE-2460-217-HD10-SH-CB</b>	Warehouse Cart w/Shelf and Center Brake	24" x 60"

## &gt;&gt; WALKIE RIDER BULK DELIVERY CARTS

**Features:**

- > Steel understructure
- > Standard 8" x 2" urethane center wheels with (4) 6" x 2" TPR square tread swivel casters
- > Allows 2 carts to sit side by side on walkie riders or forklifts
- > Requires only 7" between forks
- > 1200 lb capacity

P/N	Description	Width x Length
<b>FHE-6</b>	Walkie Rider Bulk Delivery Cart	18" x 60"

Not available with center brakes



## >> ALUMINUM PLATFORM TRUCKS

> Start your custom Platform Truck with a deck type and size then add on to your part number with a handle, casters, and accessories

### Formed

#### Features:

- > Formed deck design is strong and lightweight
- > Extremely durable
- > Design eliminates warping and waving
- > Tread plate or smooth plate decks available
- > 4 handle styles available
- > 2 rigid, 2 swivel non-marking TPR casters, resists and rejects metal shavings, chips or other debris
- > Standard with one 150 handle



PTF-2448T-150-850



PTF-2436S-150-850

#### Formed Deck Platform Truck

Tread Plate Deck P/N	Smooth Plate Deck P/N	Deck Width x Length
PTF-2436T	PTF-2436S	24" x 36"
PTF-2448T	PTF-2448S	24" x 48"
PTF-3048T	PTF-3048S	30" x 48"
PTF-3060T	PTF-3060S	30" x 60"
PTF-3072T	PTF-3072S	30" x 72"
PTF-3648T	PTF-3648S	36" x 48"

### Welded

#### Features:

- > Heavy duty welded design uses exclusive side rails that prevent resistance to twisting and deck curling
- > Extremely durable
- > Tread plate or smooth plate decks available
- > Optional carpeted deck and full perimeter rubber bumper
- > 4 handle styles available
- > 2 rigid, 2 swivel non-marking TPR casters, resists and rejects metal shavings, chips or other debris
- > Standard with one 150 handle



PT-2448T-150-850



PT-2448S-150-850

#### Welded Deck Platform Truck

Tread Plate Deck P/N	Smooth Plate Deck P/N	Deck Width x Length
PT-2436T	PT-2436S	24" x 36"
PT-2448T	PT-2448S	24" x 48"
PT-2460T	PT-2460S	24" x 60"
PT-3048T	PT-3048S	30" x 48"
PT-3060T	PT-3060S	30" x 60"
PT-3072T	PT-3072S	30" x 72"
PT-3648T	PT-3648S	36" x 48"
PT-3660T	PT-3660S	36" x 60"
PT-3672T	PT-3672S	36" x 72"

## Handles



150



155



160



165

P/N	Description
150	Handle, no Strap, Standard
155	Handle, 1 Strap
160	Handle, 2 Straps
165	Handle, w/18" Panel



650



850

## Casters

P/N	Description	Size	Capacity
650	Caster, Poly Core, Round TPR Tread	6" x 2"	1,500 lb
850	Caster, Poly Core, Round TPR Tread	8" x 2"	2,000 lb

\*Welded deck is required for full perimeter rubber bumper  
 \*\*Full perimeter rubber bumper is required with carpeted deck

## Accessories



PT-3060-150-850-C-310



Welded Deck Corner with Bumper

P/N	Description
300	Rubber Bumper, Black (Welded Platform Only)*
310	Rubber Bumper, Gray (Welded Platform Only)*
C	Carpeted Deck (Welded Platform Only)**
060	Floor Locks for 6" Casters
080	Floor Locks for 8" Casters



060



080

## >> ALUMINUM PALLET DOLLIES

### Features:

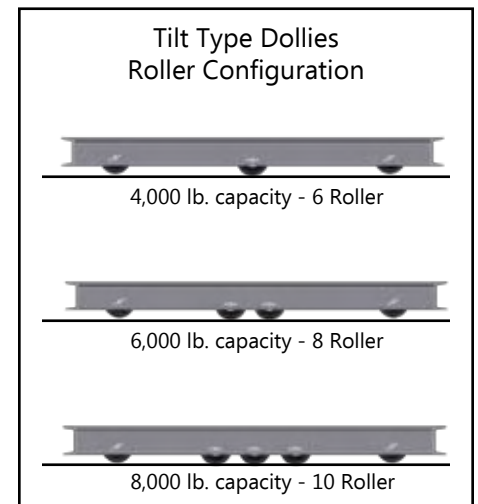
- > Light weight, only about 40 lbs.
- > Strong extruded aluminum frame and steel axles
- > Maneuverable, tilt construction with 360° turning  
(Non-tilt also available)
- > 3-1/2" rollers with sealed bearings
- > Capacities - 4,000 to 8,000 lbs.



4848-10T-CB

Size Width x Length Length is Travel Direction	4,000 Lb Capacity 6 Roller		6,000 Lb Capacity 8 Roller		8,000 Lb Capacity 10 Roller	
	P/N	Weight	P/N	Weight	P/N	Weight
36" x 36"	3636-6T	32 lbs	3636-8T	37 lbs	3636-10T	40 lbs
36" x 42"	3642-6T	34 lbs	3642-8T	40 lbs	3642-10T	43 lbs
36" x 48"	3648-6T	36 lbs	3648-8T	41 lbs	3648-10T	44 lbs
40" x 48"	4048-6T	36 lbs	4048-8T	42 lbs	4048-10T	45 lbs
42" x 42"	4242-6T	37 lbs	4242-8T	43 lbs	4242-10T	46 lbs
42" x 48"	4248-6T	37 lbs	4248-8T	43 lbs	4248-10T	46 lbs
48" x 48"	4848-6T	38 lbs	4848-8T	44 lbs	4848-10T	47 lbs
24" x 24"	2424-6T	34 lbs				

If a non-tilt type of pallet dolly is desired, delete the "T" in the part number and replace it with a "NT" when ordering, there is no extra charge for non-tilt type pallet dollies



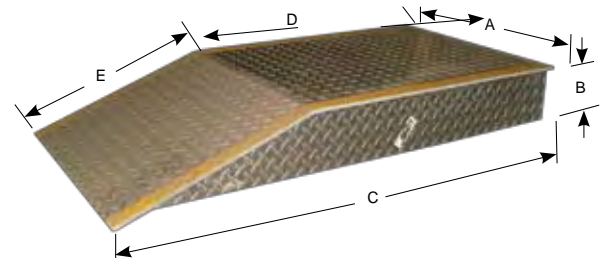
### Accessories

P/N	Description
H	Two Handle Loops and Handle
CB	Center Support Crossbar

Add a "H" or "CB" to the end of your part number to add an accessory

## >> ALUMINUM WHEEL RAMP

B Height	C Length			A 18" Wide		A 24" Wide	
	Overall	Level	Incline	P/N	Weight	P/N	Weight
6"	48"	30"	18"	PR-18-6-48	64 lbs	PR-24-6-48	79 lbs
	60"	42"	18"	PR-18-6-60	77 lbs	PR-24-6-60	94 lbs
	102"	84"	18"	PR-18-6-102	126 lbs	PR-24-6-102	145 lbs
8"	54"	30"	24"	PR-18-8-54	78 lbs	PR-24-8-54	94 lbs
	60"	36"	24"	PR-18-8-60	85 lbs	PR-24-8-60	103 lbs
	108"	84"	24"	PR-18-8-108	147 lbs	PR-24-8-108	169 lbs
10"	60"	30"	30"	PR-18-10-60	95 lbs	PR-24-10-60	115 lbs
	66"	36"	30"	PR-18-10-66	102 lbs	PR-24-10-66	124 lbs
	72"	42"	30"	PR-18-10-72	111 lbs	PR-24-10-72	133 lbs
	114"	84"	30"	PR-18-10-114	166 lbs	PR-24-10-114	188 lbs
12"	72"	36"	36"	PR-18-12-72	125 lbs	PR-24-12-72	143 lbs
	78"	42"	36"	PR-18-12-78	137 lbs	PR-24-12-78	153 lbs
	120"	84"	36"	PR-18-12-120	188 lbs	PR-24-12-120	213 lbs



### To Select Your Ramp:

Ramp selection is based on the following three items:

A Width - Based on the maximum wheel width of your largest vehicle. For double wheel vehicles, choose the 24" width and use the ramp at the inside wheel location.

B Height - Determined by the following formula:  
 Dock Height + 2" = \_\_\_\_\_  
 minus Truck Bed Height = \_\_\_\_\_  
 Choose the next highest standard height in chart.

Capacity for all models is 12,000 lbs per ramp



SPECIFICATIONS			5/16" Aluminum		
Width x Length	Max Height Difference	Leg Length	Capacity lbs.	P/N	Weight lbs.
30" X 24"	3"	7"	2,196	EL-3024	42
30" X 30"	4"	7"	1,757	EL-3030	47
30" X 36"	5"	7"	1,464	EL-3036	53
30" X 48"	7"	9"	1,098	EL-3048	68
36" X 24"	3"	7"	2,636	EL-3624	46
36" X 30"	4"	7"	2,108	EL-3630	53
36" X 36"	5"	7"	1,757	EL-3636	59
36" X 48"	7"	9"	1,318	EL-3648	76
48" X 24"	3"	7"	3,514	EL-4824	55
48" X 30"	4"	7"	2,811	EL-4830	64
48" X 36"	5"	7"	2,343	EL-4836	72
48" X 48"	7"	9"	1,757	EL-4848	94
60" X 24"	3"	7"	4,393	EL-6024	64
60" X 30"	4"	7"	3,514	EL-6030	75
60" X 36"	5"	7"	2,928	EL-6036	85
60" X 48"	7"	9"	2,196	EL-6048	111

Also available with hand slots. (not shown)  
Add "HS" to part number

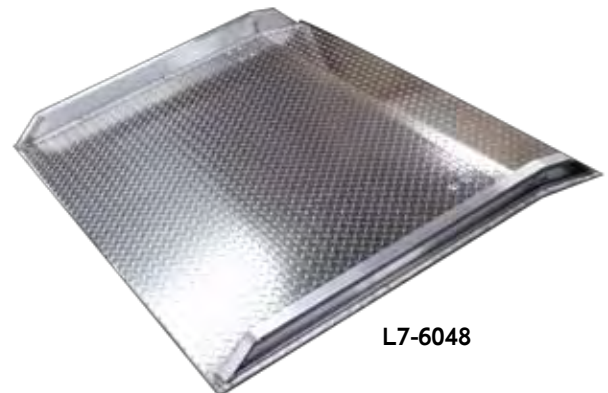


>> 5/16" WELDED CURB DOCK BOARDS

**Features:**

- > Fully welded aluminum with steel bolt on legs
- > Add on handles and lifting chains available

SPECIFICATIONS			5,000-7,000 lb Capacity 5/16" Aluminum, 3" High Steel Curbs		
Width x Length	Max Height Difference	Leg Length	Capacity lbs.	P/N	Weight lbs.
48" X 36"	5"	7"	7,000	L7-4836	80
48" X 48"	7"	9"	7,000	L7-4848	107
48" X 60"	10"	12"	7,000	L7-4860	133
60" X 36"	5"	7"	7,000	L7-6036	93
60" X 48"	7"	9"	7,000	L7-6048	124
72" X 36"	5"	7"	5,000	L5-7236	106
72" X 48"	7"	9"	5,000	L5-7248	141



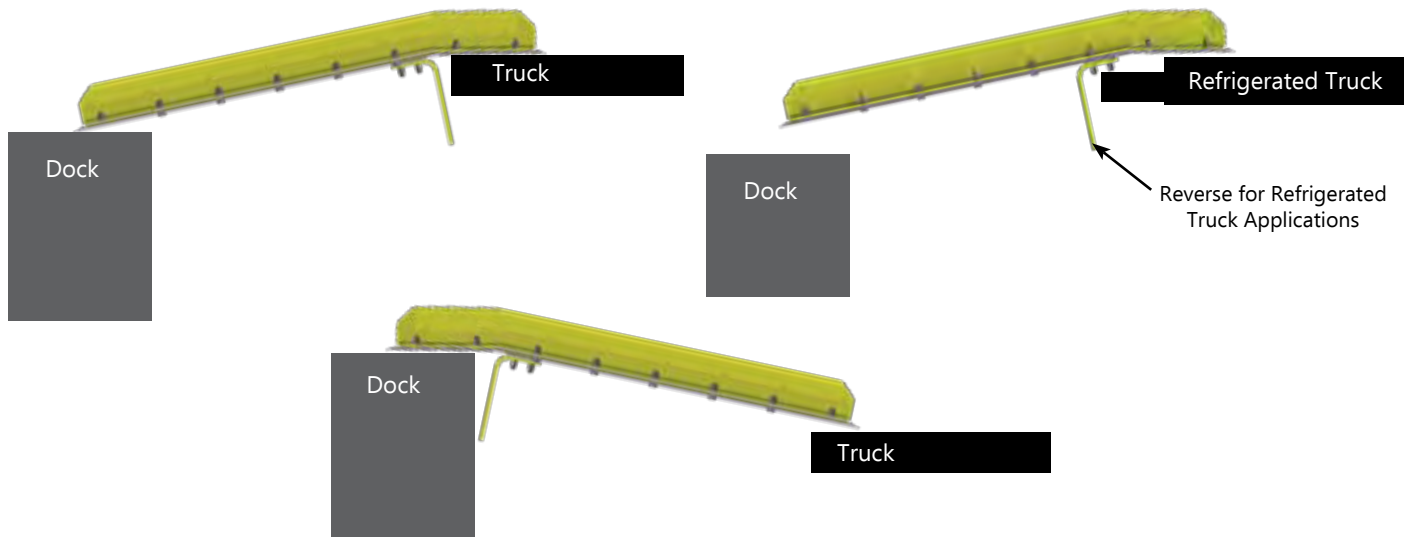
## >> STEEL CURB DOCK BOARDS

### Features:

- > Lightweight aluminum deck with safety tread plate surface
- > Beveled edges provide smooth entry and exit
- > Engineered bend keeps the edges of the dock board flush with both dock and truck
- > Heavy duty steel bolt-on legs can be reversed for refrigerated applications
- > Heavy duty bolt on steel curbs
- > Optional heavy duty lifting chains for forklift moving of dock boards
- > Two year warranty



SPECIFICATIONS			10,000 lb Capacity 3/8" Aluminum, 4" High Steel Curbs			15,000 lb Capacity 1/2" Aluminum, 4" High Steel Curbs		
Width x Length	Max Height Difference	Leg Length	Capacity	P/N	Weight	Capacity	P/N	Weight
48" x 36"	5"	7"	10,000 lbs	ADS10-4836	115 lbs	15,000 lbs	ADS15-4836	136 lbs
48" x 48"	7"	9"	10,000 lbs	ADS10-4848	151 lbs	15,000 lbs	ADS15-4848	180 lbs
48" x 60"	10"	12"	10,000 lbs	ADS10-4860	189 lbs	15,000 lbs	ADS15-4860	225 lbs
60" x 36"	5"	7"	10,000 lbs	ADS10-6036	126 lbs	15,000 lbs	ADS15-6036	153 lbs
60" x 48"	7"	9"	10,000 lbs	ADS10-6048	169 lbs	15,000 lbs	ADS15-6048	204 lbs
60" x 60"	10"	12"	10,000 lbs	ADS10-6060	211 lbs	15,000 lbs	ADS15-6060	255 lbs
60" x 72"	12"	18"	10,000 lbs	ADS10-6072	261 lbs	15,000 lbs	ADS15-6072	314 lbs
72" x 36"	5"	7"	10,000 lbs	ADS10-7236	174 lbs	15,000 lbs	ADS15-7236	193 lbs
72" x 48"	7"	9"	10,000 lbs	ADS10-7248	190 lbs	15,000 lbs	ADS15-7248	255 lbs
72" x 60"	10"	12"	10,000 lbs	ADS10-7260	237 lbs	15,000 lbs	ADS15-7260	322 lbs
78" x 36"	5"	7"	N/A			15,000 lbs	ADS15-7836	178 lbs
78" x 48"	7"	9"				15,000 lbs	ADS15-7848	238 lbs
78" x 60"	10"	12"				15,000 lbs	ADS15-7860	297 lbs
78" x 72"	12"	18"				15,000 lbs	ADS15-7872	357 lbs



## How to choose a Dock Board:

**Step 1:** Determine Capacity - Add the weight of the forklift and the weight of the maximum load to be carried.

**Step 2:** Determine Width - The width of the dock board should be at least 18 inches wider than your widest equipment passing over the board. Remember, safety curbs take up 6 inches of usable width.

*Example:* A 60 inch dock board has 54 inches of usable space.

**Step 3:** Determine Length - You need to know the maximum difference between the height of the dock and the height of the highest truck bed.

1. MAX. TRUCK HEIGHT		
2. MINUS DOCK HEIGHT	-	
3. EQUALS HEIGHT DIFFERENCE	=	

Using the chart below, determine the length of the board you need. An 11° bend is standard.

*Example:* If the maximum height difference is 7 inches, a board at least 48 inches long is required.

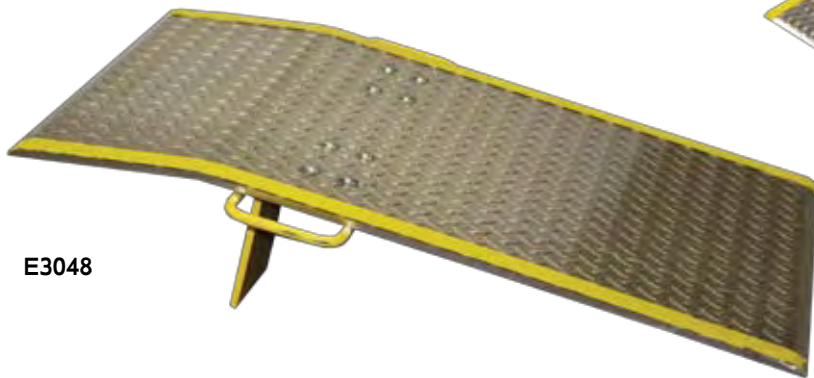
Length Calculation Table																		
Maximum Height Difference	1"	2"	3"	4"	5"	5.5"	6"	7"	8"	8.5"	9"	10"	11"	12"	13"	14"	15"	16"
Minimum Length Required for Standard 11° Slope				30"	36"		42"	48"		54"		60"	66"	72"	78"	84"	90"	96"

For replacement components visit our web site [www.bpmfg.com](http://www.bpmfg.com)

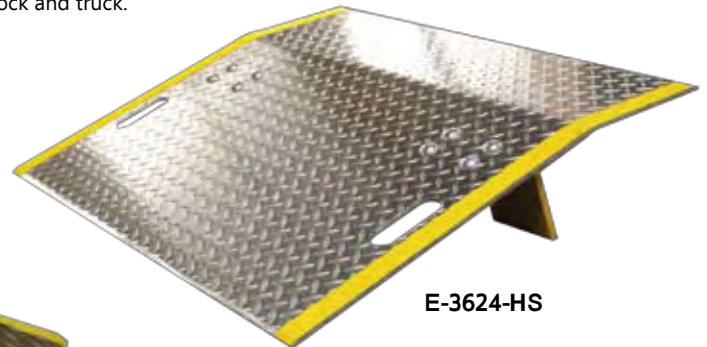
## >> ALUMINUM DOCK PLATES

### Features:

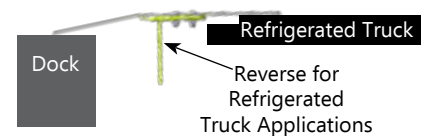
- > High traction, safety tread plate surface gives positive traction for equipment and safe footing for personnel.
- > Bolt-on legs/handles allow for quick field repair and ease of moving/lifting - Easily reversed for refrigerated trucks.
- > Beveled edges provide smooth entry and exit.
- > Engineered bend keeps the edges of the dock plate flush with both dock and truck.
- > Safety yellow edges for low light visibility
- > Standard with 2 handles, hand slots available upon request
- > Two year warranty



E3048



E-3624-HS



### How to choose a Dock Plate:

#### NON-MOTORIZED USE ONLY

**Step 1:** Determine Width - add 12" to the widest load that will go over the plate

**Step 2:** Determine Capacity - weight of pallet jack + maximum weight of items carried + operator weight  
**If the maximum load is within 50 lbs of the stated capacity, select the next highest capacity**

**Step 3:** Determine Length - required length is determined by height difference between dock and truck floor, use the table below

Length Calculation Table																		
Maximum Height Difference	1"	2"	3"	4"	5"	5.5"	6"	7"	8"	8.5"	9"	10"	11"	12"	13"	14"	15"	16"
Minimum Length Required for Standard 11° Slope				30"	36"		42"	48"		54"		60"	66"	72"	79"	84"	90"	96"

### A NOTE ABOUT CAPACITIES

All B&P dock plates are rated at actual capacities, per Aluminum Industry Association standards.

Some other companies rate capacities with a formula that considers the fact that only two wheels of the four wheel vehicle will be on the plate at one time. This can artificially overstate the capacities of the plates, creating a potentially dangerous situation. We state our capacities as actual, giving you an extra margin of safety.

SPECIFICATIONS			E SERIES 3/8" Plate			EH SERIES 1/2" Plate		
Width x Length	Max Height Difference	Leg Length	Capacity	P/N	Weight	Capacity	P/N	Weight
30" x 24"	3"	7"	3,000 lbs	E-3024	46 lbs	5,200 lbs	EH-3024	55 lbs
30" x 30"	4"	7"	2,300 lbs	E-3030	53 lbs	4,100 lbs	EH-3030	64 lbs
30" x 36"	5"	7"	1,800 lbs	E-3036	60 lbs	3,500 lbs	EH-3036	72 lbs
30" x 48"	7"	9"	1,400 lbs	E-3048	76 lbs	2,600 lbs	EH-3048	94 lbs
36" x 24"	3"	7"	3,600 lbs	E-3624	51 lbs	6,200 lbs	EH-3624	62 lbs
36" x 30"	4"	7"	3,000 lbs	E-3630	58 lbs	5,100 lbs	EH-3630	72 lbs
36" x 36"	5"	7"	<b>2,500 lbs</b>	<b>E-3636</b>	<b>68 lbs</b>	4,300 lbs	EH-3636	82 lbs
36" x 48"	7"	9"	1,900 lbs	E-3648	87 lbs	3,000 lbs	EH-3648	108 lbs
42" x 24"	3"	7"	4,300 lbs	E-4224	57 lbs	7,200 lbs	EH-4224	68 lbs
42" x 30"	4"	7"	3,300 lbs	E-4230	64 lbs	5,900 lbs	EH-4230	81 lbs
42" x 48"	7"	9"	2,100 lbs	E-4248	96 lbs	3,500 lbs	EH-4248	123 lbs
48" x 24"	3"	7"	5,200 lbs	E-4824	62 lbs	8,200 lbs	EH-4824	75 lbs
48" x 30"	4"	7"	4,100 lbs	E-4830	72 lbs	6,300 lbs	EH-4830	90 lbs
48" x 36"	5"	7"	<b>3,500 lbs</b>	<b>E-4836</b>	<b>83 lbs</b>	5,300 lbs	EH-4836	104 lbs
48" x 42"	6"	9"	3,000 lbs	E-4842	96 lbs	4,300 lbs	EH-4842	122 lbs
48" x 48"	7"	9"	<b>2,600 lbs</b>	<b>E-4848</b>	<b>107 lbs</b>	3,800 lbs	EH-4848	137 lbs
48" x 60"	10"	12"	<b>1,800 lbs</b>	<b>E-4860</b>	<b>132 lbs</b>	2,900 lbs	EH-4860	168 lbs
60" x 24"	3"	7"	5,700 lbs	E-6024	71 lbs	10,000 lbs	EH-6024	90 lbs
60" x 30"	4"	7"	4,600 lbs	E-6030	85 lbs	7,800 lbs	EH-6030	108 lbs
60" x 36"	5"	7"	4,100 lbs	E-6036	98 lbs	6,600 lbs	EH-6036	125 lbs
60" x 42"	6"	9"	3,500 lbs	E-6042	115 lbs	5,500 lbs	EH-6042	148 lbs
60" x 48"	7"	9"	2,900 lbs	E-6048	129 lbs	4,800 lbs	EH-6048	164 lbs
60" x 60"	10"	12"	2,000 lbs	E-6060	160 lbs	3,700 lbs	EH-6060	203 lbs
72" x 30"	4"	7"	5,400 lbs	E-7230	98 lbs	9,500 lbs	EH-7230	125 lbs
72" x 36"	5"	7"	4,300 lbs	E-7236	118 lbs	7,800 lbs	EH-7236	145 lbs
72" x 48"	7"	9"	3,400 lbs	E-7248	151 lbs	5,900 lbs	EH-7248	191 lbs

\*Popular sizes in **red bold print**

To substitute hand slots to your dock plate add "HS" to your part number



## Twin Tooth Traction

### Features:

- > Transports easily in your delivery vehicle
- > Ideal for city deliveries where space is limited
- > Widths and lengths to suit any application
- > Two year warranty
- > Built in handles



### Type A Apron End

The level-off apron overlaps the truck bed  
Safety chain (18") standard

### Type F Hook End

Steel hooks lock onto the truck bed providing flush-type direct entry

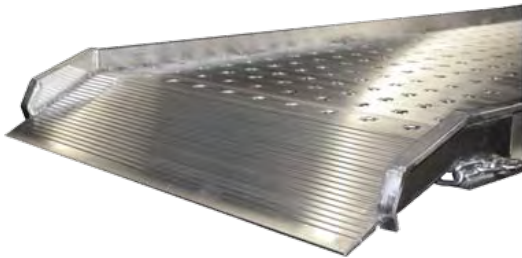


Type	Height Range		Length	Capacity	26" Width		28" Width		38" Width	
	Min	Max			P/N	Weight	P/N	Weight	P/N	Weight
A Apron End	6"	21"	6'	2,000 lbs	-	-	PR-2806-A	48 lbs	PR-3806-A	61 lbs
	6"	25"	7'	1,800 lbs	-	-	PR-2807-A	56 lbs	PR-3807-A	70 lbs
	6"	29"	8'	1,700 lbs	-	-	PR-2808-A	63 lbs	PR-3808-A	79 lbs
	6"	33"	9'	1,650 lbs	-	-	PR-2809-A	70 lbs	PR-3809-A	88 lbs
	6"	38"	10'	1,500 lbs	-	-	PR-2810-A	77 lbs	PR-3810-A	97 lbs
	6"	46"	12'	1,400 lbs	-	-	PR-2812-A	92 lbs	PR-3812-A	115 lbs
	6"	54"	14'	1,200 lbs	-	-	PR-2814-A	107 lbs	PR-3814-A	133 lbs
	6"	62"	16'	1,000 lbs	-	-	PR-2816-A	121 lbs	PR-3816-A	151 lbs
F Hook End	6"	23"	6'	2,000 lbs	PR-2606-F	47 lbs	PR-2806-F	49 lbs	PR-3806-F	62 lbs
	6"	27"	7'	1,800 lbs	PR-2607-F	54 lbs	PR-2807-F	57 lbs	PR-3807-F	71 lbs
	6"	31"	8'	1,700 lbs	PR-2608-F	61 lbs	PR-2808-F	64 lbs	PR-3808-F	80 lbs
	6"	35"	9'	1,650 lbs	PR-2609-F	68 lbs	PR-2809-F	71 lbs	PR-3809-F	89 lbs
	6"	40"	10'	1,500 lbs	PR-2610-F	75 lbs	PR-2810-F	79 lbs	PR-3810-F	98 lbs
	6"	48"	12'	1,400 lbs	PR-2612-F	89 lbs	PR-2812-F	93 lbs	PR-3812-F	116 lbs
	6"	56"	14'	1,200 lbs	PR-2614-F	103 lbs	PR-2814-F	108 lbs	PR-3814-F	134 lbs
	6"	64"	16'	1,000 lbs	PR-2616-F	117 lbs	PR-2816-F	122 lbs	PR-3816-F	152 lbs

## Punched Traction

### Features:

- > Holes are punched in the material, providing superior traction
- > Won't collect ice, mud, snow, or debris
- > Punched design reduces the weight without sacrificing strength
- > Custom widths available
- > Apron end or steel hooks to lock onto truck bed for flush-type direct entry
- > Built in handles



### Type F - Hook End

Steel hooks lock onto the truck bed providing flush-type direct entry



### Type A - Apron End

The level-off apron overlaps the truck bed  
Safety chain (18") standard

Type	Height Range		Length	Capacity	26" Width		28" Width		38" Width	
	Min	Max			P/N	Weight	P/N	Weight	P/N	Weight
A Apron End	6"	21"	6'	2,000 lbs	PRP-2606-A	43 lbs	PRP-2806-A	44 lbs	PRP-3806-A	57 lbs
	6"	25"	7'	1,800 lbs	PRP-2607-A	50 lbs	PRP-2807-A	52 lbs	PRP-3807-A	66 lbs
	6"	29"	8'	1,700 lbs	PRP-2608-A	56 lbs	PRP-2808-A	59 lbs	PRP-3808-A	74 lbs
	6"	33"	9'	1,650 lbs	PRP-2609-A	63 lbs	PRP-2809-A	66 lbs	PRP-3809-A	82 lbs
	6"	38"	10'	1,500 lbs	PRP-2610-A	69 lbs	PRP-2810-A	73 lbs	PRP-3810-A	91 lbs
	6"	46"	12'	1,400 lbs	PRP-2612-A	83 lbs	PRP-2812-A	87 lbs	PRP-3812-A	107 lbs
	6"	54"	14'	1,200 lbs	PRP-2614-A	96 lbs	PRP-2814-A	100 lbs	PRP-3814-A	124 lbs
	6"	62"	16'	1,000 lbs	PRP-2616-A	110 lbs	PRP-2816-A	114 lbs	PRP-3816-A	141 lbs
F Hook End	6"	23"	6'	2,000 lbs	PRP-2606-F	44 lbs	PRP-2806-F	45 lbs	PRP-3806-F	58 lbs
	6"	27"	7'	1,800 lbs	PRP-2607-F	51 lbs	PRP-2807-F	53 lbs	PRP-3807-F	67 lbs
	6"	31"	8'	1,700 lbs	PRP-2608-F	57 lbs	PRP-2808-F	60 lbs	PRP-3808-F	75 lbs
	6"	35"	9'	1,650 lbs	PRP-2609-F	64 lbs	PRP-2809-F	67 lbs	PRP-3809-F	83 lbs
	6"	40"	10'	1,500 lbs	PRP-2610-F	70 lbs	PRP-2810-F	74 lbs	PRP-3810-F	92 lbs
	6"	48"	12'	1,400 lbs	PRP-2612-F	84 lbs	PRP-2812-F	88 lbs	PRP-3812-F	108 lbs
	6"	56"	14'	1,200 lbs	PRP-2614-F	97 lbs	PRP-2814-F	101 lbs	PRP-3814-F	125 lbs
	6"	64"	16'	1,000 lbs	PRP-2616-F	111 lbs	PRP-2816-F	115 lbs	PRP-3816-F	142 lbs

## >> HTS ULTRA-RACK

*The HTS Ultra-Rack Hand Truck Sentry System streamlines the process of loading, unloading and storing hand trucks aboard commercial delivery vehicles.*

- > **Reduce Labor Costs** Reducing the time of each and every stop by increasing the ease of access, storage and retrieval of the hand truck
- > **Reduce Liability** Eliminate the possibility of hand trucks falling off the delivery vehicle during transportation
- > **Reduce Risk of Driver Injury** Helps eliminate injuries due to unsafe handling and retrieval of hand trucks. Helps lower workers compensation claims
- > **Reduce Risk of Hand Truck Loss** With the Ultra-Rack, hand trucks are returned to the truck and not left at delivery sites or stolen. Saves time by not having to drive back and retrieve a forgotten hand truck.



Hand trucks are locked safe and secure. No climbing, reaching or bending to load or unload from the vehicle. Eliminate product and vehicle damage from loose and bouncing hand trucks.



The HTS uses a dash release button with a flashing light and audible alarm to warn the driver if the hand truck is not locked in the Ultra-Rack. Also has a manual key override on the Ultra-Rack frame.



**SAVE ROUTE TIME, LABOR COSTS, FUEL, HAND TRUCKS AND CARGO SPACE!  
REDUCE WORKER INJURIES, TEMPERATURE LOSS, CARGO DAMAGE AND ACCIDENTS!**

For more information visit: [www.handtrucksystems.com](http://www.handtrucksystems.com) or call (866) 388-2102

This page is for informational purposes only. B&P Manufacturing does not manufacture, sell or service HTS products and assumes no liability for HTS products.

[illegible]

We manufacture the highest quality delivery products, **guaranteed!** We're so confident, we offer you a no obligation demo program. Order our products and try them risk free, for 30 days. If you don't agree that they are simply the best products available, we will take them back!

Contact your local distributor to arrange a demo today.



8051 East Boon Road  
Cadillac, Michigan 49601  
U.S.A.

(800)-334-7141  
(231)-775-2229  
(231)-775-0013 (fax)

[www.bpmfg.com](http://www.bpmfg.com)

email us at:  
[bpsales@bpmfg.com](mailto:bpsales@bpmfg.com)

