



THE EVOLUTION OF DRUM HANDLING

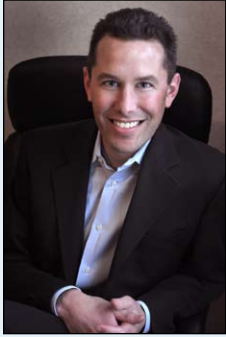
MORSE <PILOT>

Inside

	Page
Morse < PILOT >	2
MORcinch™ Drum Handling System	3
Hydra-Lift Karriers	4
Vertical-Lift Drum Pourers	5
Diameter Adaptors & Drum Cones	5
Forklift-Karriers	6
MORSpeed™ Forklift Attachments	7
Forklift Mounted Drum Rackers	7
Below-Hook Kontrol-Karriers	8
Below-Hook Drum Lifters	9
Drum Tumblers	10
Drum Rollers	11
Drum Rackers	12
Mobile-Karriers	13
Drum Palletizers	13
Clamp+Go™ Dolly Handle	14
Drum Dollies	14
Drum Trucks & Cradles	14
PailPRO™ 5-Gallon Pail Handlers	15
Drum Heaters and Pail Heaters	16
Drum Wrenches	16
Drum Faucets	16
Drum Hand Pumps	16



You get MORE with MORSE



Since 1923 Morse Manufacturing has been dedicated to giving you more - and in today's world of increased domestic and international competition you should expect more. What can you expect from Morse Manufacturing?

- **Customer Service:** Expect personal attention from one of our customer service representatives. Visit the Company Directory on our web site, give us a call and let us get to know you personally.
- **Dealer Support:** We value your time and your knowledge! You can expect assistance with any drum-handling question when you contact us.
- **Product Support:** If you have a technical question, expect to speak with one of the design engineers themselves. We strive to make sure you get the product that meets your needs.
- **Product Selection:** Morse offers the most extensive line of drum-handling equipment. If you don't see what you need in our standard offering, our custom capabilities will help to meet your needs.
- **Product Quality:** Every Morse Product design was professionally engineered inhouse to exceed industry standards. You see foreign products that look like a Morse? Know with confidence who designed the original! We are so confident in our products, our skilled employees, our certified welders, and our production process that we offer a 2-Year Guarantee against all defects.
- **Product Information:** Current and informative product literature and parts diagrams. Visit the literature pages on our web site. We labor tirelessly to keep our literature up to date and you informed of any product introductions or changes.
- **History:** With a history of over 90 years, you can expect us to provide you with replacement parts or product upgrades when you need them in the future - 5, 10, or 20 years from now. Morse is committed to manufacturing our products in the USA.

Thanks for considering Morse for your drum handling needs. Please feel free to contact us.

Nathan Andrews
 President
 Phone: (315) 437-8475
 Email: info@MorseDrum.com



**Improve Productivity with a
 New Morse < PILOT >
 Power-Propelled
 Walk-Behind
 Drum Handlers**



Morse < PILOT > Model # 900

- Dispense a 1500 Lb. (680 kg) drum up to 10.5' (3.2 m) high, and 11" (28 cm) beyond the straddle legs
- Power-Propelled Walk-Behind
- Powered Drum Lift and Rotation
- Features the **MORcinch™** Drum Handling System for steel, plastic or fiber drum. . . .and even a smaller drum

New Morse < PILOT > Drum Handlers feature intuitive, industry-standard throttle, steering and drum positioning controls...so you can put them online quickly.

Lift a 1500 Lb. (680 kg) drum at 25 ft/min (5 cm/sec). *

Control speed with ergonomic twist grip or thumb control. Maximum travel speed is 3.0 mph (4.8 km/hr) or 4.4 ft/sec (1.3 m/sec) with 1500 Lb. (680 kg) drum. *

Mechanical brake in top and bottom 15° of handle arc actuates disc brake proportional to handle movement, allowing operator complete control of braking from "feathering" for accurate payload positioning through full emergency stop. When released, handle returns to upright position and applies the brake.

Built-in safety systems include proven "belly-button" switch help prevent an operator being pinned between the < PILOT > and any other object. Upon body contact, switch activates low speed in the opposite direction. "Dead-man" braking occurs when spring loaded control handle is released, turning off electrical power and applying brakes.

Adjustable straddle I.D. from 38" to 50" (96.5 to 127 cm), adjustable in 4" increments to work with various size pallets.

Internally mounted battery "smart" charger provides amount of charge necessary. Plugs into standard 110V AC outlet.

* Note: Lift and travel speeds will increase with lighter loads. Maximum travel speed with empty drum is 3.6 mph with maximum lift speed of 39 ft/sec.



Familiar Controls for propulsion and steering. Raise and Lower Buttons also incorporated in handle.



Lift and Tilt Control Handles

Power-Propelled Drum Handlers

MORCINCH™ Drum Handling System

VIDEOonline

VIDEOonline

Model # 900

< PILOT > Drum Pourer

Transport, lift and dispense a drum up to 10.5 feet (3.2 m) high! Fully invert your drum in just 8 seconds with familiar ergonomic controls.

Features the MORcinch™ Drum Handling System. The manual grip drum holder automatically adjusts for a 22" to 23.5" diameter drum. Accepts options to handle a plastic or fiber drum, and Diameter Adaptors for a smaller drum.

Capacity is 1500 Lb. (680 kg).



< PILOT > Model # 900

Lift and Pour a Drum up to 10.5 feet (3.2 m) high

Model # 905

< PILOT > Scale-Equipped Drum Pourer

Adds the ability to weigh while you pour, so you can dispense just the amount you need.

Capacity is 800 Lb. (363 kg).



Model # 910

< PILOT > MORStak™ Drum Racker Rack your 55-gallon (208 liter) steel or plastic drum with top rim up to 10.5 feet (3.2 m) high!

This safety conscious MORStak™ Drum Racker, allows you to move drums on and off racks, pallets, trucks, etc. Lift an upright drum and place in horizontal position. Rack rimmed 55-gallon steel or plastic drums side by side with virtually zero clearance between them. Handle your drum with a drum faucet in place allowing your drum rack to serve as a dispensing station.

Capacity is 800 Lb. (363 kg).

< PILOT > Model # 910

Rack a Drum Horizontally up to 10.5 feet (3.2 m) high

Model # 915

< PILOT > MORSpeed™ Drum Mover / Stacker

Lift and transport an upright drum up to 9.5 feet (2.9 m) high.

The MORSpeed™ drum grabber is a proven, safety conscious way to handle drums. Lift and move almost any rimmed steel, fiber or plastic drum, regardless of diameter.

Requires no manual contact with drum utilizing a completely mechanical and automatic drum grab as you raise against the side of your drum. Mechanism automatically releases drum when you set it down on floor, shelf, pallet, etc.

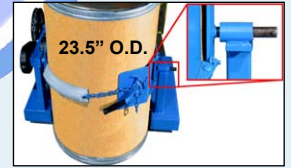
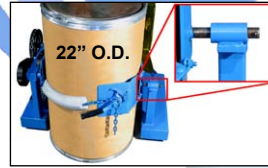
Note: Requires a minimum drum height of 24" (61 cm), and minimum drum weight of 75 Lb. (34 kg) to activate the drum gripping mechanism. Capacity is 1500 Lb. (680 kg).



< PILOT > Model # 915

Move and Stack an Upright Drum up to 9.5 feet (2.9 m) high

Drum holder automatically adjusts for 22" to 23.5" (56 to 59.7 cm) diameter drum with sliding idler and durable stress relief weld joints



Has a flexible cinch chain cover to enhance grip and help protect sidewall of your drum. Or order Web Strap and Ratchet option.



MORcinch™ Drum Holder with flexible cinch chain cover



MORcinch™ Drum Holder with optional Web Strap & Ratchet (5115i-P) installed

The MORcinch™ Drum Handling System is a feature of:

Morse < PILOT > Power Propelled Drum Handlers

Hydra-Lift Karriers and Vertical-Lift Drum Pourers

Forklift-Karriers and Below-Hook Kontrol-Karriers

Expand your MORcinch™ Drum Handler by adding any of the following:

Top Rim Clamp for 55-gallon plastic drum with top rim

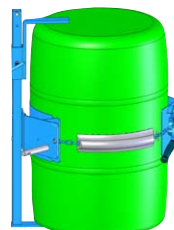


Top Rim Clamp

The Top Rim Clamp (part # 4560-P) grips the upper rim of your drum to prevent it from slipping through the drum holder. Spark Resistant Top Rim Clamp is part # 4560M-P. Stainless Steel Top Rim Clamp is part # 4560SS-P.



Bracket Assembly for rimless plastic drum or to more safely handle a fiber drum

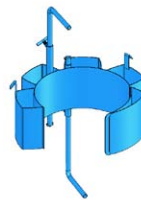


Bracket Assembly

Install the Bracket Assembly (part # 4556-P) as a brace at top and bottom of your drum to prevent it from slipping lengthways through the drum holder. Adjust it for a drum from 31" to 39" tall. Spark Resistant Bracket is part # 4556M-P. Stainless Steel Bracket is part # 4556SS-P.

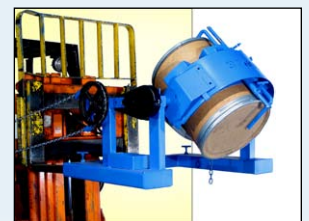


Diameter Adaptors to handle various smaller drums with the same drum handler



Diameter Adaptor

Simply insert the correct size Diameter Adaptor into the drum holder. Diameter Adaptors for 17.5" diameter and smaller drums have integrated brackets at top and bottom of the drum that adjust to securely hold a drum up to 38" tall. Also available made of spark resistant monel or stainless steel (page 5).



Hydra-Lift Karriers

Lift an 800 Lb. drum and pour up to 96" high

VIDEOonline

- Models to lift, move and pour a drum up to 8' high
- Power lift and tilt options
- Rotate drum 360° in either direction
- MORcinch™ Drum Handling System (page 3) accepts options for handling a plastic drum, a fiber drum, or various sizes of smaller drums

One person can safely and easily handle a heavy drum with a Morse Hydra-Lift Karrier. Adjust the drum tilt angle for controlled dispensing of the contents from your drum. Order your Hydra-Lift Karrier with optional AC, DC or Air power lift and tilt.

The MORcinch™ Drum Holder automatically adjusts for 22" to 23.5" diameter drum, and accepts options (page 3) for plastic or fiber drum, and Diameter Adaptors for smaller drums.



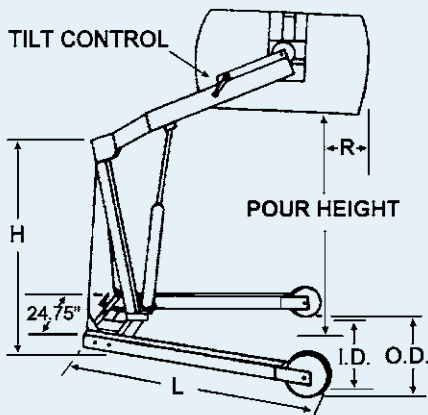
Model 400A-96-110
Capacity: 800 Lb.
Pour height: 96"
Power Option # 110
electric power lift and tilt



Model 400A-72
Capacity: 800 Lb.
Pour height: 72"
Hand pump drum lift
Chain wheel drum tilt
Shown with MORcinch™
Bracket Assembly
Option # 4556-P
(sold separately)

Dimensions

(refer to chart at right)



Heavy-Duty Hydra-Lift Karriers

Lift a 1200 Lb. drum and pour up to 72" high



Heavy-Duty Hydra-Lift Karriers feature a twin boom overhead assembly with two lift cylinders. The lower frame has parallel legs and nylon wheels. They include the MORcinch™ Drum Holder.

Model 410-110
Capacity: 1200 Lb.
Pour height: 72"
Power Option # 110
electric power lift and tilt.

Hydra-Lift Karriers with Manual Lift and Tilt

Model #	Capacity	Pour Height	R	H	L	O.D.	I.D.	Tilt Control	Ship Wt.
410	1200 Lb.	72"	1"	53"	60"	36"	27"	Chain Wheel	499 Lb.
400A-60	800 Lb.	60"	12"	55"	60"	44"	37"	Hand Crank	319 Lb.
400A-72	800 Lb.	72"	6"	55"	60"	44"	37"	Chain Wheel	327 Lb.
400A-96	800 Lb.	96"	- 4"	69"	72.5"	49"	42"	Chain Wheel	379 Lb.

Manual lift and tilt models have hydraulic hand pump drum lift, and manual drum tilt control.

Power Options make drum handling easier and faster. Enjoy the ergonomic advantage of powered lift and tilt with electric, 12V battery or air power options. To order a complete unit with a power option, use the Power Option # from the chart at right as a suffix on the Model number.

Example: Model 400A-96-110 (shown at top) is the Hydra-Lift Karrier with 96" lift and Power Option # 110 - Electric Power Lift and Tilt.

We recommend the MORStop Tilt-Brake Option factory installed on each new manual tilt Hydra-Lift Karrier. It automatically holds the drum tilt angle, even when drum contents shift.

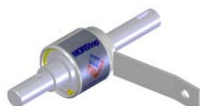
You may handle a drum with a faucet, valve or drum cone (page 13) attached to control dispensing.

Stainless steel models and models with spark resistant parts are available.

Power Options

Power Option #	Description	Motor Type	Motor Control	Ship Wt. Adder
110	AC Power Lift and Tilt	1HP/115V/60Hz AC	Switch, Cord and Plug	75 Lb.
114	Air Power Lift and Tilt	Air, Vane Type	On/Off Air Valve *	95 Lb.
115	Battery Power Lift and Tilt	12V DC with charger	Built-in	120 Lb.
120	AC Power Lift, Manual Tilt	1HP/115V/60Hz AC	Switch, Cord and Plug	40 Lb.
124	Air Power Lift, Manual Tilt	Air, Vane Type	On/Off Air Valve *	25 Lb.
125	Battery Power Lift, Manual Tilt	12V DC with charger	Built-in	85 Lb.

* Requires FRL = Filter, Regulator, and Lubricator (order Morse option # 3869I-P).



Install **MORStop Tilt-Brake** option to automatically prevent unwanted drum tilting.

Manual Tilt Control Options

Option #	Description
X01	Hand Crank and MORStop Tilt-Brake
X02	Hand Crank
X03	16" Diameter Hand Wheel
3900i-P	MORStop Tilt-Brake Factory installed on new unit
3900-P	MORStop Tilt-Brake for field installation on existing unit

- Lift, move, weigh and pour a drum up to 106" high
- Easy to maneuver with tight turning radius
- Compact base provides small foot print
- Lifts drum straight up
- Rotate drum 360° in either direction
- Features MORcinch™ Drum Handling System (page 3)
- Power lift and tilt options
- Scale-equipped units available

Vertical-Lift Drum Pourers



Model 520-110 has 106" pour height and AC power lift and tilt.

Vertical-Lift Drum Pourers allow you to control the lift height and pouring angle of your drum weighing up to 800 Lb. Rotate a drum 360° in either direction, and pour up to 106" high. Power lift and tilt provide easy, ergonomic drum handling.

The MORcinch™ Drum Holder automatically adjusts for 22" to 23.5" diameter drum, accepts options for plastic or fiber drum, accepts various Diameter Adaptors for smaller drums, has a flexible chain cover to help protect the sidewall of your drum, and includes safety covered gears.

Models with spark resistant parts are available. Stainless steel models are also available on a custom basis.

Scale-Equipped Vertical-Lift Drum Pourers

Allow you to weigh as you pour! Eliminate the need to move a drum to a separate scale. Dispense exactly how much you need as you view drum weight on built in scale indicator.



Model 515-T-114

has 60" pour height, is scale-equipped with intrinsically safe indicator, and has air power lift and tilt.

Example Vertical-Lift Drum Pourers

Model #	Pour Height	Scale Type	Power Option (see page 12)	Ship Wt.
515-T-114	60"	T	114	835 Lb.
525-N-124	106"	N	124	921 Lb.
510-115	60"	No Scale	115	695 Lb.
520-125	106"	No Scale	125	858 Lb.

Two Scale Types Available



"T" Type Intrinsic safe scale indicator for use in hazardous areas.

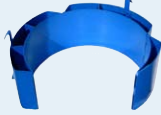


"N" Type scale indicator NOT for hazardous environments.

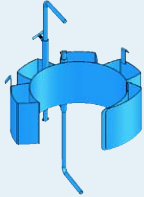
Diameter Adaptors

Add the correct Diameter Adaptor for each smaller drum to handle multiple drum sizes with same drum handler. Simply and quickly place into and remove from the drum holder. Adaptors for 17.5" diameter and smaller have adjustable hold-down brackets for up to 38" tall drum.

Stainless steel and spark resistant adaptors are also available.



Model 55/30-19



Model 55/30-16

Standard	Spark Resistant	Stainless Steel	Fits Diameter	Ship Wt.
55/30-22	55/30M-22	55/30SS-22	21.5" to 22"	11 Lb.
55/30-20.5	55/30M-20.5	55/30SS-20.5	20" to 20.5"	20 Lb.
55/30-19	55/30M-19	55/30SS-19	18.5" to 19"	24 Lb.
55/30-17.5	55/30M-17.5	55/30SS-17.5	17" to 17.5"	35 Lb.
55/30-16	55/30M-16	55/30SS-16	15.5" to 16"	35 Lb.
55/30-14.5	55/30M-14.5	55/30SS-14.5	14" to 14.5"	36 Lb.

Drum Cones

Replace your drum lid with a Cone and Clamp Collar to reduce dust while dispensing dry material. Start and stop dispensing through the 6" opening with a slide gate or iris valve. Each cone is sized for a specific drum diameter of steel or fiber drum from 15.5" up to 23.5". They are available with 45° or 60° angle, and made of regular or stainless steel.



Drum Cone (5-VF-45-23)
Iris Valve Kit (IV)
Clamp Collar (7-23)



Stainless Steel Drum Cone (5SS-VF-45-23) with Slide Gate Kit (SG-SS) and Clamp Collar (7SS-23)

Model #	Description	Ship Wt.
5-VF-45-23	Drum Cone with 45 degree angle, Size # 23	20 Lb.
5-VF-60-23	Drum Cone with 60 degree angle, Size # 23	20 Lb.
5SS-VF-45-23	Stainless Steel Drum Cone with 45 degree angle, Size # 23	20 Lb.
5SS-VF-60-23	Stainless Steel Drum Cone with 60 degree angle, Size # 23	20 Lb.
IV	Iris Valve Kit	10 Lb.
SG	Slide Gate Kit	5 Lb.
SG-SS	Stainless Steel Slide Gate Kit	5 Lb.
7-23	Clamp Collar, Size # 23	15 Lb.
7SS-23	Stainless Steel Clamp Collar, Size # 23	15 Lb.



Stainless Steel Vertical-Lift Drum Pourers

Models are available on a custom basis. They are often required in food and pharmaceutical applications.



Model 285A Forklift-Karrier

Has 800 Lb. capacity. You control drum tilt with 30:1 ratio gear and sprocket drive. MORcinch™ Drum Handling System (page 3) with options for handling plastic drum, fiber drum or various smaller drums.

VIDEOonline

Model 285A-HD Heavy-Duty Forklift-Karrier

Handle drum up to 1500 Lb. Provides finer tilt control with 60:1 ratio gear and sprocket drive. Features MORcinch™ Drum Handling System (page 3).



Model 285A-GR Extra Heavy-Duty Forklift-Karrier

Provides 2000 Lb. capacity with an enclosed worm gear speed reducer for drum tilt control with 150:1 ratio. It has two web straps to secure the drum in the holder.



Model 285XGR Super-Duty Forklift-Karrier

Handle extremely heavy drum up to 2500 Lb. Designed with a heavily reinforced 3-piece drum holder, and an enclosed worm gear speed reducer with 150:1 ratio for drum tilt control.



- Lift, move, and pour a drum with your forklift
- Rotate drum 360° in either direction
- Models with MORcinch™ Drum Handling System (page 3) accept options for handling:
 - Plastic drum
 - Fiber drum
 - Various sizes of smaller drum

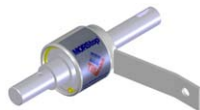
Turn your forklift into a safety conscious drum handler with a Morse Forklift-Karrier. Lift, move and control pouring of a heavy drum right from the seat of your forklift. Forklift-Karriers mount quickly and easily onto the forks, requiring no power connections or modifications to your truck.

You may attach a Drum Cone, faucet or valve to control dispensing.

Models with spark resistant parts are available. Stainless steel models are made on a custom basis.

We recommend the MORStop Tilt-Brake Option factory installed on each 800 Lb. and 1500 Lb. capacity Forklift-Karrier with manual tilt. It automatically holds the drum tilt angle, even when contents shift.

Model #	Capacity	Description	Ship Wt.
Forklift-Karriers with MORcinch™ Drum Handling System			
285A	800 Lb.	Standard duty Forklift-Karrier	149 Lb.
285AM	800 Lb.	Standard duty Forklift-Karrier with spark resistant parts	149 Lb.
285A-HD	1500 Lb.	Heavy-duty Forklift-Karrier	171 Lb.
285AM-HD	1500 Lb.	Heavy-duty Forklift-Karrier with spark resistant parts	171 Lb.
Forklift-Karrier with Two Web Straps for 55-Gallon Steel Drum			
285A-GR	2000 Lb.	Extra Heavy-Duty Forklift-Karrier	273 Lb.
Forklift-Karriers with 3-Piece Drum Holder for 55-Gallon Steel Drum			
285G	800 Lb.	Standard duty Forklift-Karrier with 3-piece drum holder	162 Lb.
285G-HD	1500 Lb.	Heavy-duty Forklift-Karrier with 3-piece drum holder	176 Lb.
285XGR	2500 Lb.	Super-Duty Forklift-Karrier	350 Lb.
285XMGR	2500 Lb.	Super-Duty Forklift-Karrier with spark resistant parts	350 Lb.



Install MORStop Tilt-Brake option to automatically prevent unwanted drum tilting.

Manual Tilt Control Options

Option #	Description
X01	Hand Crank and MORStop Tilt-Brake
X02	Hand Crank
X03	16" Diameter Hand Wheel
3900i-P	MORStop Tilt-Brake Factory installed on new unit
3900-P	MORStop Tilt-Brake for field installation on existing unit

Forklift-Karrier with Battery Power Tilt VIDEOonline

Model 285A-BP

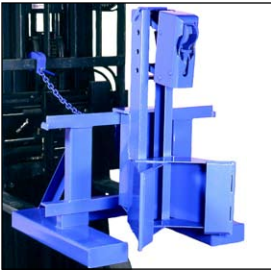
Use a two-button pendant or optional wireless tilt control (shown) to pour a drum with your fork truck. Fully invert your drum in 15 seconds. On board battery and charger are included. No power connection or modification of your truck is required.

Handle: 55-gallon steel drum. Accepts MORcinch™ options to handle plastic or fiber drum (page 3), and Diameter Adaptors for smaller drums (page 13).

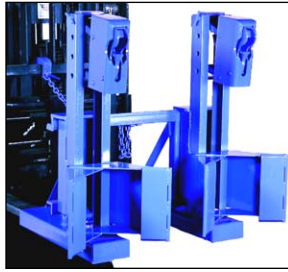


Model #	Capacity	Description	Ship Wt.
285A-BP	1500 Lb.	Battery powered tilt. 1500 Lb. capacity. Accepts Top Rim Clamp or Bracket Assembly.	355 Lb.
285XBP	2500 Lb.	Battery powered tilt. 2500 Lb. capacity.	532 Lb.
4804i-P	--	Wireless Control Option factory installed	5 Lb.

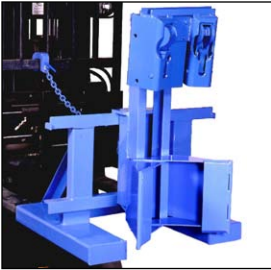
MORSpeed™ Models



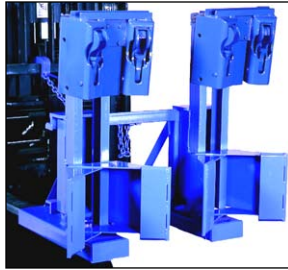
Model 288-1 is designed to handle one rimmed drum.



Model 288-2 is designed to handle one or two rimmed drums at a time.



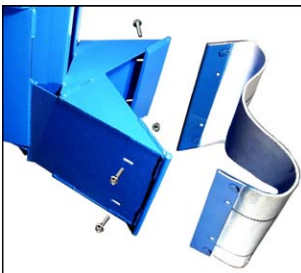
Model 288-1-2H has two heads to handle one rimmed drum.



Model 288-2-2H handle one or two rimmed drums at a time with two heads per drum.



Wide MORSpeed™ jaws are contoured to securely grasp virtually any rimmed drum. The encased mechanism provides precise, reliable, automatic drum gripping. Two heads per drum versions reduce stress on the drum by distributing the weight between two sets of jaws. This is a feature of Models 288-1-2H, 288-2-2H and 287-2H.



Option: Belt Kit part # 2523-P puts a fabric surface in front of the steel backrest of the MORSpeed™ to protect the finish on your drum. It is easy to install using 4 bolts provided. MORSpeed™ models use one belt kit per drum.

Model #	Description	Ship Wt.
288-1	1 Drum Handler, 1 head for the drum	257 Lb.
288M-1	1 Drum Handler, spark resistant parts, 1 head	272 Lb.
288-1-2H	1 Drum Handler, 2 heads for the drum	301 Lb.
288-2	2 Drum Handler, 1 head per drum	376 Lb.
288M-2	2 Drum Handler, spark resistant parts, 1 head/drum	394 Lb.
288-2-2H	2 Drum Handler, 2 heads per drum	488 Lb.
287	Carriage Mount Drum Handler, 1 head for the drum	138 Lb.
287M	Carriage Mount Drum Handler, spark resistant parts, 1 head for the drum	138 Lb.
287-2H	Carriage Mount Drum Handler, 2 heads per drum	186 Lb.
2523-P	Option: Belted Backrest Kit (order 1 per drum)	5 Lb.

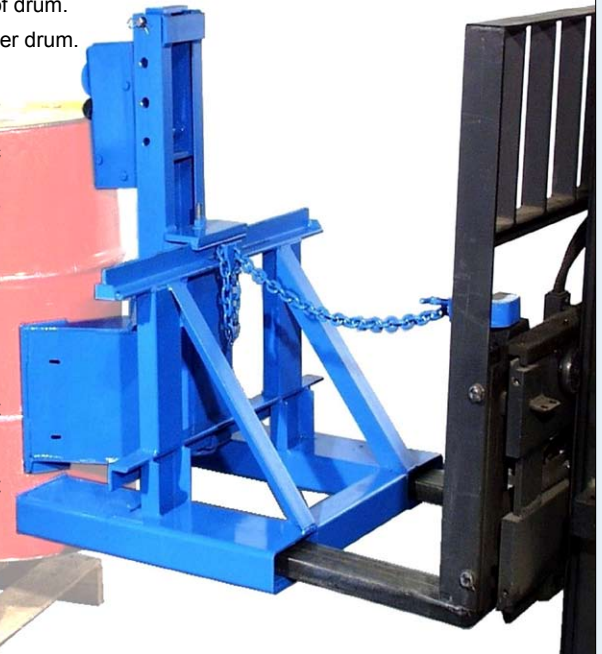
MORSpeed™ Forklift Attachments [VIDEOonline](#)

Fast handling of rimmed drums with your forklift

Lift, move and place drums right from your forklift. Mount on forks in seconds without any tools. No power connections. Raise forks to grip drums. Massive steel jaws grip upper rim of drum.

Capacity: 1500 Lb. per drum.

Use MORSpeed™ forklift attachments to handle rimmed steel, fiber or plastic drums. Quickly and easily move drums without leaving your forklift. Load drums onto trucks or pallets. Even handle damaged or straight walled drums. They handle any diameter, but require a minimum drum height of 24". The minimum weight required to actuate the jaws is 75 Lb. per drum (350 Lb. for models with two heads per drum).



MORStak™ Forklift Mounted Drum Rackers [VIDEOonline](#)



Model 289F

Use the safety conscious MORStak™ Forklift Mounted Drum Rackers, to move drums on and off racks, pallets and trucks with your forklift. Lift an upright drum and place it in horizontal position. Rack rimmed 55-gallon steel or plastic drums weighing up to 800 Lb. side by side with virtually zero clearance between them. Handle a drum with faucet in place, allowing drum rack to serve as a dispensing station.

Control drum tilting with the 2-button pendant that reaches back to the forklift operator, or optional wireless tilt control (shown right). On board 12V deep cycle battery and charger are included for powered tilt with self-contained hydraulics. The positive drum gripping mechanism must be manually engaged to lift an upright drum or tilt a drum from horizontal. MORStak™ drum rackers will not allow you to tilt your drum without the clamp engaged.



Model #	Description	Ship Wt.
289F	Fork mounted drum racker	622 Lb.
289C	Carriage mounted drum racker	600 Lb.
4804i-P	Wireless Control Option factory installed	5 Lb.



Model 185A Kontrol-Karrier

Has 800 Lb. capacity. You control drum tilt with 30:1 ratio gear and sprocket drive. MORcinch™ Drum Handling System (page 3) with options for handling plastic drum, fiber drum or various smaller drums.

Lift, move and control pouring of your heavy drum with a Morse Kontrol-Karrier attached to your hoist or crane.

We recommend MORStop Tilt-Brake option on each 800 Lb. and 1500 Lb. capacity Kontrol-Karrier, to add automatic hold of the drum tilt angle.

Models with spark resistant parts available. Stainless steel models also available.

VIDEOonline

Model 185A-HD Heavy-Duty Kontrol-Karrier

Handle drum up to 1500 Lb. Provides finer tilt control with 60:1 ratio gear and sprocket drive. Features MORcinch™ Drum Handling System (page 3).



Model 185A-GR Extra Heavy-Duty Kontrol-Karrier

Provides 2000 Lb. capacity with an enclosed worm gear speed reducer for drum tilt control with 60:1 ratio. It has two web straps to secure the drum in the holder.



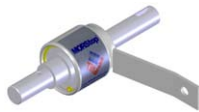
Model 185XGR Super-Duty Kontrol-Karrier

Handle extremely heavy drum up to 2500 Lb. Designed with a heavily reinforced 3-piece drum holder, and an enclosed worm gear speed reducer with 150:1 ratio for drum tilt control.



- Lift, move, and pour a drum with your hoist or crane
- Rotate drum 360° in either direction
- Models with MORcinch™ Drum Handling System (page 3) accept options for handling a plastic drum, fiber drum, and various sizes of smaller drum
- Every Morse Below-Hook Drum Handler is load tested at the factory as per American National Standard ASME B30.20 and a load test certificate is shipped enclosed with each unit.

Model #	Capacity	Description	Ship Wt.
Kontrol-Karriers with MORcinch™ Drum Handling System			
185A	800 Lb.	Standard duty Kontrol-Karrier	98 Lb.
185AM	800 Lb.	Standard duty Kontrol-Karrier with spark resistant parts	102 Lb.
185A-HD	1500 Lb.	Heavy-duty Kontrol-Karrier	114 Lb.
185AM-HD	1500 Lb.	Heavy-duty Kontrol-Karrier with spark resistant parts	121 Lb.
185A-HDSS	1500 Lb.	Stainless steel heavy-duty Kontrol-Karrier	114 Lb.
Kontrol-Karrier with Two Load Binders for 55-Gallon Steel Drum			
185A-GR	2000 Lb.	Extra Heavy-Duty Kontrol-Karrier	177 Lb.
Kontrol-Karriers with 3-Piece Drum Holder for 55-Gallon Steel Drum			
185G	800 Lb.	Standard duty Kontrol-Karrier with 3-piece drum holder	85 Lb.
185G-HD	1500 Lb.	Heavy-duty Kontrol-Karrier with 3-piece drum holder	118 Lb.
185XGR	2500 Lb.	Super-Duty Kontrol-Karrier	286 Lb.
185XMGR	2500 Lb.	Super-Duty Kontrol-Karrier with spark resistant parts	300 Lb.



Install **MORStop Tilt-Brake** option to automatically prevent unwanted drum tilting.

Manual Tilt Control Options

Option #	Description
X01	Hand Crank and MORStop Tilt-Brake
X02	Hand Crank
X03	16" Diameter Hand Wheel
3900i-P	MORStop Tilt-Brake Factory installed on new unit
3900-P	MORStop Tilt-Brake for field installation on existing unit

Power-Tilt Kontrol-Karriers

VIDEOonline

Provide the ease of powered drum rotation 360° in either direction. Fully invert your drum in 15 seconds with an AC 2-button pendant (shown) or a hand-held control valve on air powered models. Handle 55-gallon steel drum up to 1500 Lb. Accepts Bracket Assembly for a plastic or fiber drum, and Diameter Adaptors (page 13) for smaller drums.

Model #	Description	Ship Wt.
195A-1-115	AC power-tilt, 1-phase/115V motor	467 Lb.
195A-3-230	AC power-tilt, 3-phase/230V motor	467 Lb.
195A-3-460	AC power-tilt, 3-phase/460V motor	467 Lb.
195A-A	Air motor power-tilt	453 Lb.
195AM-A	Air motor power-tilt, spark resistant parts	460 Lb.



Model 195A-1-115

Drum Karriers to lift, move and pour a drum within your reach below a hook on a hoist or crane. You manually control the tilt angle of the drum. Use the built-in tilt lock to hold the drum vertical for transporting, or in horizontal position to pour. Capacity: 800 Lb.

Model #	Description	Ship Wt.
85i	For 55-gallon steel drum, accepts adaptors	43 Lb.
85A	For 55-gallon steel drum	41 Lb.
85AM	Spark resistant parts, for 55-gallon steel drum	41 Lb.
85i-SS	Stainless steel for 55-gal. steel, accepts adaptors	41 Lb.
85C	For fiber or steel drum, 21" to 23" diameter	41 Lb.
85-5	For 5-gallon pail	31 Lb.



Every Morse Below-Hook Drum Lifter is load tested at the factory as per American National Standard ASME B30.20 and a load test certificate is shipped enclosed with each unit.

Below-Hook Drum Lifters

These drum lifters automatically grip below the rim of your closed steel, fiber or plastic drum.

Handle:

18" to 26" diameter (I.D.) rimmed drum

30 to 55-gallon drum

85-gallon steel salvage or overpack (NOT for lifting plastic overpacks)

Capacity: 1000 Lb.



Model #	Description	Ship Weight
92	Drum Lifter for rimmed 18" to 26" diameter	25 Lb.
92M	Spark Resistant Drum Lifter for rimmed 18" to 26" diameter	31 Lb.
92-SS	Stainless Steel Drum Lifter for rimmed 18" to 26" diameter	25 Lb.
92-30	Drum Lifter for rimmed 15" to 23" diameter	25 Lb.
92-5	Drum Lifter for rimmed 5-gallon pail 11" to 15" diameter	23 Lb.

Lifter for Drum and Overpack

Model 91 has simple tong design with broad grippers, providing fast overpacking. Its narrow profile allows complete lowering into an overpack drum.

Handle: 55-gallon steel drum into overpack or 85-gallon steel overpack.

Capacity: 1000 Lb.

Ship weight: 19 Lb.



Heavy-Duty Drum Lifters

Lift and move your heaviest drum with this below-hook lifter. Upend or downend a drum using off-vertical mode.

Models 42 and 42-G have alloy chain, links and lifting rings with heavy-duty steel rod and welded eyes. Forged steel hooks engage drum rims. Model 42-G has hot dipped galvanized finish.

Handle: 55 or 85-gallon steel drum.

Capacity: 2000 Lb.

Ship weight: 9 Lb.



Fork Mount Hook Model 284

Model 284 allows you to use your forklift like a hoist. Slide this hook onto one fork of your truck and tighten the T-screw to use a below-hook drum lifter. Fork opening is 5.5" x 1.56"

Capacity: 2000 Lb. Ship weight: 11 Lb.



Verti-Karriers

Grab, lift, move and place your drum. Verti-Karriers grip the drum automatically, then release it only when the drum is set down. This saves time for your operators and discourages dangerous climbing.

Handle: Rimmed 55-gallon steel drum.

Capacity: 1000 Lb.



Model #	Description	Ship Weight
90	Verti-Karrier for 55-gallon steel drum	46 Lb.
90M	Spark Resistant Verti-Karrier for 55-gallon steel drum	47 Lb.
90-SS	Stainless Steel Verti-Karrier for 55-gallon steel drum	46 Lb.
90-30	Verti-Karrier for 30-gallon steel drum	45 Lb.
90-85	Verti-Karrier for 85-gallon steel salvage drum	59 Lb.

Drum Lifter Models 86 & 86-SS

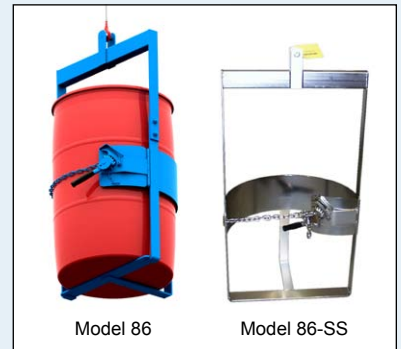
Use to lift and transport an upright drum with your hoist or crane. Holds securely around your drum and has bottom support bar.

Handle: Steel, plastic or fiber drum 22" to 23.5" in diameter, and 23" to 38" high.

Model 86 is carbon steel painted blue. Model 86-SS is type 304 stainless steel.

Capacity: 1000 Lb.

Ship weight: 61 Lb.



Drum Lifting Hook

Use model 41 drum lifter with your hoist, crane or fork mounted hook to lift and move a heavy drum. Has an alloy steel lifting ring, steel rods and malleable iron hooks.

Handle: 55-gallon steel drum 34" to 36" long.

Capacity: 1000 Lb.

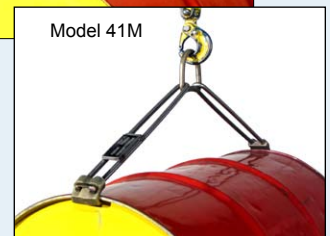
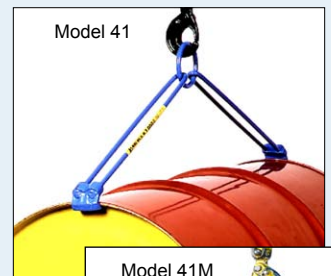
Ship weight: 5 Lb.

Spark-Resistant Drum Lifting Hook

Model 41M is like model 41, but lifting ring and hooks are spark resistant aluminum/bronze alloy, and rods are stainless steel.

Handle: 55-gallon steel drum 34" to 36" long.

Capacity: 1000 Lb. Ship weight: 6 Lb.



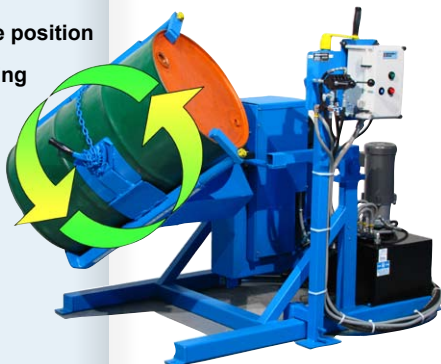
BELOW-HOOK DRUM LIFTERS

IMPORTANT: Install all Morse Drum Rollers and Drum Tumblers in accordance with OSHA requirements for enclosure and safety interlock, etc. One way to accomplish this, is a Morse Guard Enclosure with safety interlock to automatically shut off the drum rotator when the gate is opened.

Tilt-To-Load Drum Tumblers

VIDEOonline

- Load your upright drum at floor level
- Ergonomic power-lift drum to rotate position
- Vigorous “corner-over-corner” mixing
- Rotate steel, plastic or fiber drum of various sizes (29” to 37” tall, 18” to 23.5” diameter)



Tumble drum to mix contents



Load with drum truck, hoist or crane



Secure drum in holder



Power tilt control

Morse Tilt-To-Load Drum Rotators thoroughly mix the contents of your closed drum with vigorous “corner-over-corner” tumbling. Load drum at floor level. Secure drum in holder, then use one handle to lift drum and a second handle to control drum rotation.

Drum rotation is variable from 5 to 20 RPM. Models available with explosion-proof motor or air motor for hazardous areas. 50Hz models have 20% reduction in drum RPM.

Capacity: 800 Lb. for a full drum, 400 Lb. for a half-full drum. Half-full capacity is for a bottom-heavy, unbalanced or shifting load, harder to tilt than a full drum.

Model #	Description	Ship Wt.
310-3-230	Tilt-To-Load Drum Rotator, 3-phase 230V motor and controls	1240 Lb.
GEK-310-3-230	Guard Enclosure Kit with Safety Interlock for Model 310-3-230 (Drum Tumbler sold separately)	400 Lb.

Save Time, Labor and Money!

- Save labor of transferring contents and clean-up
- Improve safety by eliminating spills, contamination, and exposure to contents
- Remix settled ingredients with no container to purge between batches, and without inserting anything into your drum

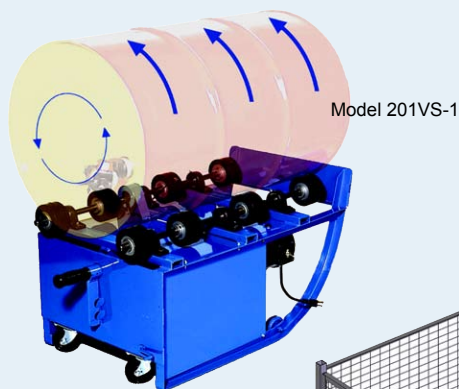
Tilt-To-Load Drum Tumblers with Automated Control Package and Safety Enclosure

VIDEOonline

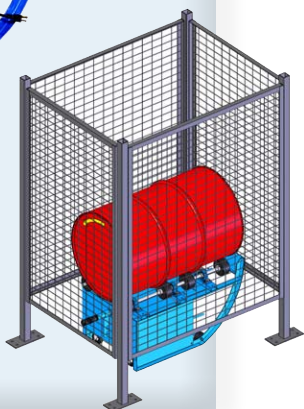
The Automated Control Package automatically lifts your drum, rotates it for the time you set, then returns it to upright position at floor-level for easy handling. Model#311-3-230 includes Tilt-To-Load Drum Tumbler, Automated Control Package, and Enclosure with Safety Interlock.



Model #	Description	Ship Wt.
311-3-230	Tilt-To-Load Drum Tumbler with Automated Control Package, and Enclosure with Safety Interlock (ships in 2 parts)	
	Drum Tumbler with Automated Controls	1100 Lb.
	Guard Enclosure Kit with Safety Interlock	400 Lb.



Model 201VS-1



Guard Enclosure with safety interlock model GEK-201-1 shown with Drum Roller (sold separately)

Portable Drum Rollers

VIDEOonline

Roll your closed drum on its side to agitate the contents with this compact, portable industrial drum mixer. Bring important ingredients back into suspension. Eliminate worker exposure and reduce clean-up. Also use your Portable Drum Roller as a drain stand to dispense from a drum. Roll a 6” to 28” diameter steel drum up to 40” long. AC Motor is 1/2 HP, 60 Hz. Capacity: Liquid load: 500 Lb. per drum. Dry load varies: 400 Lb. at 10 RPM, 300 Lb. at 20 RPM, and 250 Lb. at 30 RPM. 50Hz models have 20% reduction in drum RPM.

Order Guard Enclosure Kit with Safety Interlock to meet OSHA requirements.

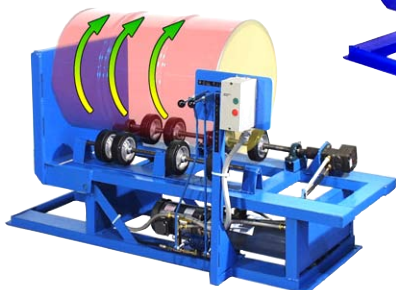
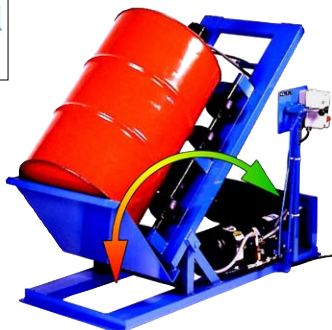
Option # POLY-201 Roll plastic drum on Portable Drum Roller.

Option # 1-5P Idler Attachment to roll 1 to 5 gallon pail. Remove to roll drum.

Model #	Description	Ship Wt.
201/20-1	Portable Drum Roller, 20 RPM, 1-phase 115V TEFC motor	168 Lb.
201VS-1	Portable Drum Roller, Variable Speed 10-24 RPM, 1-phase 115V TEFC motor	175 Lb.
GEK-201-1	Guard Enclosure Kit for 1-phase AC Portable Drum Rollers	340 Lb.
201/30-A	Portable Drum Roller, 30 RPM, air motor	151 Lb.
POLY-201	Option: Roll a plastic drum on Portable Drum Roller	62 Lb.
1-5P	Idler Attachment to roll 1 to 5 gallon can on Portable Drum Roller	7 Lb.

Hydra-Lift Drum Rollers [VIDEOonline](#)

- Load your upright drum at floor level
- Power-lift drum to rolling position
- Roll closed drum on its side to mix the contents



Enjoy the benefits of easy, ergonomic loading and unloading and eliminate the hazards of manual drum handling. Hydra-Lift Drum Rollers accept your drum in upright position at floor level. Then you control the built-in hydraulic system to lift your drum and place it quickly and easily for rotation. Start and stop rotation with a second control.

Roll your drum at 5 to 20 RPM until contents are mixed as desired, then return the drum to vertical to unload. Rotate a steel drum: 6" to 26" diameter, maximum 40" length. AC Motor is 1 HP 60 Hz. Models with 50Hz motors are also available, however, expect a 20% reduction in drum RPM.

Capacity: 1,000 Lb. liquid load, 400 Lb. dry load.

Option # POLY-456 to roll plastic drum. Extra wheels support flexible sidewall, and end stop prevents plastic drum from travelling lengthways.

OSHA requires that all drum rotators be enclosed with a safety interlock to automatically shut off the machine when the enclosure is opened.



Guard Enclosure Kit GEK-456-1-115
(Drum Roller sold separately)

Model #	Description	Ship Wt.
456-1-115	Hydra-Lift Drum Roller, 1-phase 115V TEFC motor and controls	625 Lb.
GEK-456-1-115	Guard Enclosure Kit with Safety Interlock for Model 456-1-115	375 Lb.
456-A	Hydra-Lift Drum Roller, Air Motor	622 Lb.
GEK-456-A	Guard Enclosure Kit with Safety Interlock for Model 456-A	375 Lb.
POLY-456	Option to roll a plastic drum on Hydra-Lift Drum Roller	30 Lb.

Stationary Drum Rollers [VIDEOonline](#)

- Mix right inside your sealed drums
- Bring valuable ingredients back into solution
- Place drum onto roller with model 41 or 42 drum lifter

Roll 6" to 28" diameter drum on its side. Set your drum onto the rotator wheels and roll it to mix the contents. Choose factory set drum speed of 10, 20 or 30 RPM - or choose Variable Speed models to rotate drum from 1 to 38 RPM.

Capacity: Liquid load: 1,000 Lb. per drum. Dry load varies: 400 Lb. at 10 RPM, 300 Lb. at 20 RPM, and 250 Lb. at 30 RPM. Also available: 50Hz models with 20% reduction in drum RPM.

Order Guard Enclosure Kit with Safety Interlock to meet OSHA requirements.

Option # POLY-1-5154 Roll plastic drum on single drum roller.

Option # POLY-2-5154 Roll plastic drums on double drum rollers.

Part # 1-5-1 Idler Attachment to roll a 1 to 5 gallon pail. Easily removed for rolling a drum.



Double Drum Rollers

Roll one or two drums up to 36" long. Base: 24" x 94"



Single Drum Rollers

Roll one drum up to 40" long. Base: 24" x 55"

Model #	Description	Ship Wt.
1-5154VS-1-115	Single Stationary Roller, Variable Speed 1-38 RPM, 1-phase 115V motor	306 Lb.
1-5154/10-1	Single Stationary Drum Roller, 10 RPM, 1-phase 115/230V TEFC motor	296 Lb.
GEK-1-5154-1	Guard Enclosure Kit for Single 1-phase AC Stationary Drum Rollers	
2-5154/20-E1	Double Stationary Drum Roller, 20 RPM, explosion-proof 1-phase 115/230V TEFC motor	450 Lb.
GEK-2-5154-E1	Guard Enclosure Kit for Double Explosion-Proof 1-phase AC Stationary Drum Rollers	
1-5154/30-A	Stationary Drum Roller, 30 RPM, air motor	292 Lb.
GEK-1-5154-A	Guard Enclosure Kit for Single Air Powered Stationary Drum Rollers	
POLY-1-5154	Option: Roll a plastic drum on Stationary Drum Roller	30 Lb.
POLY-2-5154	Option: Roll plastic drums on Double Stationary Drum Roller	50 Lb.
1-5-1	Idler Attachment to roll 1 to 5 gallon can on Drum Roller	12 Lb.



Guard Enclosure with safety interlock model GEK-1-5154-1 shown with Drum Roller (sold separately)

Quickly move and rack your heavy drums up to 102" high

Rack drums with virtually no space between them

Capacity: 800 Lb.

MORStak™ drum rackers move in tight spaces where your forklift won't fit... the turning radius is only 6 feet. Rack your drums with virtually no space between them. Lift a drum from either upright or horizontal position and place it into a drum rack. Handle steel or plastic rimmed 55-gallon drum. Choose electric, battery or air powered lift and tilt function. Air powered models require plant air at 40 to 60 psi flowing at a rate of 40 scfm.



1. Manually secure clamp to grip drum (top), then raise upright drum.



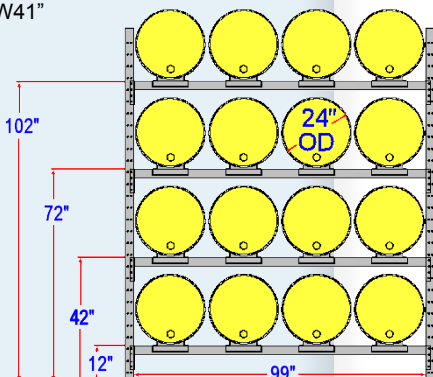
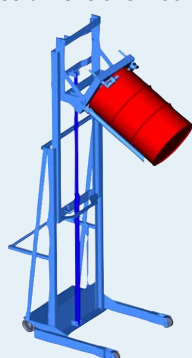
2. Tilt drum to horizontal and transport to racking location.



3. Manually release clamp, then raise drum to place in rack.

Two-Stage Series rack drum up to 102" high.

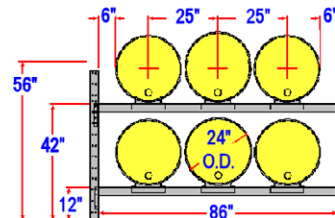
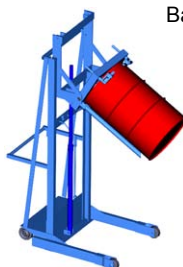
Base dimensions: L56 X W41"



Model #	Description	Ship Weight
620-115	MORStak™ Drum Racker, 102", Battery Power Lift & Tilt	950 Lb.
620-114	MORStak™ Drum Racker, 102", Air Power Lift & Tilt	985 Lb.
620M-114	MORStak™ Drum Racker, 102", Spark Resistant Parts, Air Power Lift & Tilt	985 Lb.
620-110	MORStak™ Drum Racker, 102", AC Power Lift & Tilt	900 Lb.
611-115	MORStak™ Drum Racker, 56", Battery Power Lift & Tilt	785 Lb.
611-114	MORStak™ Drum Racker, 56", Air Power Lift & Tilt	820 Lb.
611M-114	MORStak™ Drum Racker, 56", Spark Resistant Parts, Air Power Lift & Tilt	820 Lb.
611-110	MORStak™ Drum Racker, 56", AC Power Lift & Tilt	735 Lb.

Single-Stage Series rack drum up to 56" high.

Base dimensions: L49" x W36"



Omni-Lift™ Drum Rackers [VIDEOonline](#)

Rack your drum up to 72" high.

Capacity: 800 Lb.

You can easily lift, tilt and rack a heavy drum up to 6 feet high with an Omni-Lift™ Drum Racker. Power options provide quicker and more ergonomic drum racking. Choose battery, AC or air powered lift and tilt function. Omni-Lift™ Drum Rackers handle a 55-gallon steel drum, or add Option AP405 to handle a 55-gallon plastic drum. Models with spark resistant parts are also available.

With Omni-Lift™ Drum Rackers you can lift a drum from vertical or horizontal position on the floor. You can also place a drum down in either position. You can also use your Omni-Lift™ Drum racker to pour a drum.

Options:

Adaptor for 55-gallon rimmed plastic drum (part # AP405)

Filter, Regulator, Lubricator for air powered models (part # 3869-P)



Load your drum onto Stationary Drum Rollers.



Model #	Description	Ship Weight
405	Omni-Lift™ Drum Racker, Manual Lift and Tilt	428 Lb.
405-115	Omni-Lift™ Drum Racker, Battery Power Lift and Tilt	522 Lb.
405-125	Omni-Lift™ Drum Racker, Battery Power Lift, Manual Tilt	530 Lb.
405-114	Omni-Lift™ Drum Racker, Air Power Lift and Tilt	463 Lb.
405M-114	Omni-Lift™ Drum Racker, Spark Resistant Parts, Air Power Lift and Tilt	488 Lb.
405-124	Omni-Lift™ Drum Racker, Air Power Lift, Manual Tilt	451 Lb.
405M-124	Omni-Lift™ Drum Racker, Spark Resistant Parts, Air Power Lift, Manual Tilt	451 Lb.
405-110	Omni-Lift™ Drum Racker, AC Power Lift and Tilt	493 Lb.
405-120	Omni-Lift™ Drum Racker, AC Power Lift, Manual Tilt	450 Lb.

Mobile-Karriers

Raise, transport and drain a heavy drum
Capacity: 800 Lb.

Mobile-Karriers carry the drum without the need to balance or support it. Lock the drum in vertical position for transporting, or in horizontal position to pour. You can rotate a drum by hand 360° in either direction. Use it to pour a drum up to 17" high. Handle 55-gallon steel drum.

Options:

Diameter Adaptors for smaller diameter drum.



Model 80A



Model 80i-SS

Model #	Description	Ship Weight
80A	55-Gallon Steel Drum	95 Lb.
80i	55-Gallon Steel Drum, Accepts Diameter Adaptors	97 Lb.
80AM	55-Gallon Steel Drum, Spark Resistant Parts	97 Lb.
80i-SS	55-Gallon Steel Drum, made of Type 304 Stainless Steel, Accepts Diameter Adaptors	108 Lb.
80APS	55-Gallon Plastic or Steel Drum, includes Anti-Slip Strips	97 Lb.
80C	Fiber or Steel 21" to 23" Diameter Drum	97 Lb.

Drum Palletizers that Pour **VIDEOonline**

Lift upright drum up to 20" high
 Move and dispense up to 26" high
 Move drum on and off pallets
Capacity: 800 Lb.

Designed to lift and pour a heavy drum up to 26" high, when held in horizontal position. Manually rotate a drum 360° in either direction. Raise upright drum up to 20" above the floor. Lock drum in vertical position to prevent spills while transporting, or lock in horizontal position to dispense. Also move a drum to and from pallets. Handle 55-gallon steel drum. Options for handling other drums:

Top Rim Clamp for 55-gallon rimmed plastic drum (below).

Bracket Assembly for fiber drum or rimless plastic drum.

Diameter Adaptors for smaller diameter drum.



Model 82A



Model #	Description	Ship Weight
82A	Drum Palletizer / Pourer, Manual Lift	504 Lb.
82A-120	Drum Palletizer / Pourer, AC Power Lift	525 Lb.
82A-124	Drum Palletizer / Pourer, Air Power Lift	495 Lb.
82A-125	Drum Palletizer / Pourer, Battery Power Lift	551 Lb.
82AM	Drum Palletizer / Pourer, Manual Lift, Spark Resistant Parts	504 Lb.
82AM-124	Drum Palletizer / Pourer, Air Power Lift, Spark Resistant Parts	495 Lb.

Model 81 Drum Spotter **VIDEOonline**

Easily move drum on and off pallets

Capacity: 800 Lb.

The compact, easy-to-use Drum Spotter makes it simple and quick to move a drum on and off pallets. Raise the handle to engage the upper drum rim and lower the handle to lift your rimmed drum from a pallet up to 6" high. You do not need to balance or support the Drum Spotter. The handle is held up by a gas spring and ratchet stops provide several positions where the handle will stay until you take hold.

Handle rimmed steel, plastic or fiber drum 22" to 23.5" diameter, 34" to 36" tall.



Drum Movers / Palletizers **VIDEOonline**

Lift drum up to 19" high
 Move drum to and from pallet
Capacity: 1000 Lb.

You can quickly and easily move a heavy drum to and from pallets. Simply move the drum palletizer to your drum and raise the head to automatically engage the upper drum rim. It holds the drum in upright position for you to transport. Lower the drum to the floor or onto a pallet and the jaws automatically release when the drum is resting.

Raise a drum up to 19" above the floor. Handle rimmed steel, plastic or fiber drum with minimum height of 22.5". The minimum drum weight required to actuate the jaws is 75 Lb.



Spark Resistant Head of Model 82HM



Model 82H-125

Model #	Description	Ship Weight
81	Drum Spotter	245 Lb.
82H	Drum Lifter / Palletizer, Manual Lift	456 Lb.
82HM	Drum Lifter / Palletizer, Manual Lift, Spark Resistant Parts	456 Lb.
82H-120	Drum Lifter / Palletizer, AC Power Lift	470 Lb.
82H-124	Drum Lifter / Palletizer, Air Power Lift	440 Lb.
82HM-124	Drum Lifter / Palletizer, Air Power Lift, Spark Resistant Parts	440 Lb.
82H-125	Drum Lifter / Palletizer, Battery Power Lift	512 Lb.

4-Wheel Drum Trucks

VIDEOonline

Move and dispense your drum with ease
Move drum on and off pallets

Capacity: 1,000 Lb.

Morse 4-Wheel Drum Trucks make it easy to move a heavy drum. They are simple to load, maneuver and carry the full weight of a drum on four 8" polyolefin wheels. There is no need to support or balance the truck. You can move a drum on and off pallets and even stand alone in horizontal position to dispense. It's U-shaped handle is more narrow than a 55-gallon drum. When you're done using the truck, it stands upright for storage.

Handle 30, 55 or 85 gallon steel drum, 14" to 28" diameter and 30" to 41" tall. Includes most rimmed plastic or fiber drums.

Option # 5058-P Strap Kit enables you to pull a rimless plastic drum onto drum truck.



Model #	Description	Ship Wt.
160	4-Wheel Drum Truck	65 Lb.
160-SS	4-Wheel Drum Truck, T304 Stainless Steel	63 Lb.
160-WP	4-Wheel Drum Truck, 10" pneumatic wheels	85 Lb.
160-WP-SS	4-Wheel Drum Truck, 10" pneumatic wheels, T304SS	85 Lb.
160M	4-Wheel Drum Truck with spark resistant parts	63 Lb.
5058-P	Option: Strap Kit for rimless drum	2 Lb.

2 & 3 Wheel Drum Trucks

Models 152 and 153 Drum Trucks

Easy to use, inexpensive drum trucks. Trim, all steel welded construction. Handle 30, 55 or 85 gallon drum. Model 152 has 10" rubber wheels. Model 153 has 10" polyolefin wheels. Capacity: 1,000 Lb.



Model 155 Handstand Drum truck

Stands upright for convenient, space saving storage. Has a support to stand the drum truck upright. This doubles as a footrest to assist you in loading your drum. Handle 30, 55 or 85 gallon drum. Capacity: 1,000 Lb.



Model 125 "No Spill" Drum Truck

Transport your drum in upright position. Provides excellent stable control of upright drum with a handle attached to the base, two 8" polyolefin wheels, and a 4" swivel caster. Handle 55-gallon steel, plastic or fiber drum up to 24" in diameter. Capacity: 1,200 Lb.



Model #	Description	Ship Wt.
125	"No Spill" Drum Truck	45 Lb.
152	2-Wheel Drum Truck, 10" rubber wheels	42 Lb.
153	2-Wheel Drum Truck, 10" polyolefin wheels	40 Lb.
155	2-Wheel Handstand Drum Truck, 10" polyolefin wheels	46 Lb.

New Clamp+Go™ Dolly Handle

Model 24 (Patent Pending)

VIDEOonline

Clamp+GO!

Increase worker safety and efficiency by moving drum dollies with the **Clamp+Go™**. Dolly Handle. Attach to the sidewall of your drum dolly with a downward push to engage the quick-coupling mechanism, then pull from the bottom of the drum. Easily disengage from one dolly, and quickly connect to another. Use the **Clamp+Go™** with various sizes of round drum dollies.



Model 14-SS



Model 34

Round Drum Dollies - Capacity: 1000 Lb.

Easily move a drum on four 3" MORTuf polyolefin swivel casters and wide stance base. Handle up to 23" O.D.

Square Drum Dollies - Capacity: 1000 Lb.

Dolly with flat deck and rounded corners turned up to hold the drum in position. Four 3" MORTuf polyolefin swivel casters on wide stance base. Handle up to 24" O.D.

Option # 4959i-P: Stainless steel casters with polypropylene wheels on any Morse drum dolly.

Model #	Drum Dolly Description	Ship Wt.
14	Round 55-gallon, steel casters, polyolefin wheels	22 Lb.
14M	Round 55-gallon, spark resistant, steel casters, polyolefin wheels	22 Lb.
14-SS	Round 55-gallon, stainless steel, steel casters, polyolefin wheels	22 Lb.
14-SSC	Round 55-gallon, stainless steel, stainless steel casters, polypropylene wheels	22 Lb.
14-30	Round 30-gallon, steel casters, polyolefin wheels	19 Lb.
14-30SS	Round 30-gallon, stainless steel, steel casters, polyolefin wheels	20 Lb.
34	Square 55-gallon, steel casters, polyolefin wheels	22 Lb.
34-SS	Square 55-gallon, stainless steel, steel casters, polyolefin wheels	22 Lb.
34-30	Square 30-gallon, steel casters, polyolefin wheels	17 Lb.
34-30SS	Square 55-gallon, stainless steel, steel casters, polyolefin wheels	17 Lb.
34-5	Square 5-gallon, steel casters, polyolefin wheels	12 Lb.
34-5SS	Square 5-gallon, stainless steel, steel casters, polyolefin wheels	12 Lb.

Drum Cradle Trucks

Model 36 Cradle Truck Easy to load 55-gallon drum cradle with built-in retractable tipping lever. Capacity: 500 Lb. Ship weight: 30 Lb. **Model 36-SS** is type 304 stainless steel.



Model 40 and Model 31

Model 40 Cradle Truck designed with rugged angle iron construction. Capacity: 700 Lb. Ship weight: 32 Lb. Use with Model 31 Tipping Lever to assist in loading a heavy drum onto Cradle Truck. Tipping Lever is 40" steel tubing with rim hook.

Model 40-30 is like Model 40, but sized for your 30-gallon drum. Ship weight: 31 Lb.

Model 46 Cradle Truck for 15-gallon steel drum. Rock-over loading. Has four 3" polyolefin wheels. Capacity: 500 Lb. Ship weight: 20 Lb.



Model 46



Model 32

Model 31 Drum Upender provides leverage for uprighting a horizontal steel drum. Ship weight: 12 Lb.

PailPRO Series™ 5-Gallon Pail Handlers

Ergonomic, safety conscious pail handling equipment

- Increase productivity
- Help prevent repetitive motion injuries

PailPRO™ 5-Gallon Can Tumblers Mix right inside your closed cans



Single Can Tumblers

rotate one can.

Double Can Tumblers

tumble one or two cans at a time.

Thorough "corner-over-corner" mixing action. Blend or agitate dry or liquid loads. Tumble parts with media to deburr or polish. Rotation speed is 23 RPM continuous in one direction. It does not shake or oscillate.

Rotate pail or can 4.5" to 16.5" tall and up to 12.5" in diameter.

Single phase/115V models have timer for 0 to 60 minutes. AC Motor is 1/4 HP, 60 Hz. Models with explosion-proof motor or air motor available for hazardous areas.

Base dimensions: 28" x 28".

Capacity: 100 Lb. per can.

Note: OSHA requires ALL rotators to have enclosure interlocked with drive mechanism, so it cannot revolve unless guard is in place. One way to accomplish this is with a Morse enclosure with safety interlock.



Guard Enclosure GEK-2-305-1
(Can Tumbler sold separately)

Example Can Tumblers and Enclosure Kits

Model #	Description	Ship Wt.
1-305-1	Single Can Tumbler with timer, 1-phase 115V TEFC	215 Lb.
GEK-1-305-1	Guard Enclosure Kit with Safety Interlock for Model 1-305-1 (Can Tumbler sold separately)	125 Lb.
2-305-1	Double Can Tumbler with timer, 1-phase 115V TEFC	245 Lb.
GEK-2-305-1	Guard Enclosure Kit with Safety Interlock for Model 2-305-1 (Can Tumbler sold separately)	250 Lb.

PailPRO™ Below-Hook Can Tipper

Ergonomic model 85-5 pail handler to lift and pour your 5-gallon plastic or metal pail, 11" to 12" in diameter.

Capacity: 200 Lb.



PailPRO™ Below-Hook Pail Lifter

Model 92-5 is sized for your 5-gallon pail with 11" to 15" diameter.

Capacity: 1,000 Lb.



PailPRO™ 5-Gallon Pail Dollies



Place your pail weighing up to 200 Lb. onto a dolly to move it around on four 3" swivel casters. Helps employees safely move pails around and reduce repetitive lifting. Pail dollies have a flat deck design with four rounded corners turned up to hold a pail in position. Ship weight: 10 Lb.

Model 34-5 is steel construction painted blue.

Model 34-5SS is type 304 stainless steel suitable for food and pharmaceutical applications. The swivel casters have nickel plated metal components.

Option # 4959i-P: Stainless steel casters with polypropylene wheels.

Model 83 PailPRO™ 5-Gallon Pail Handler

- Lift, tilt and pour a 5-gallon pail with ease
- Dispense at up to 5 feet high

Use Morse model 83 to lift and pour a 5-gallon pail weighing up to 150 Lb. It is easy to maneuver, and compact enough to move through standard doorways. The hand wheel used to turn the pail is equipped with the MORStop Tilt-Brake which automatically locks the tilt position until you move it again. Use the parking brake to prevent the unit from moving while you pour. Moving parts of this safety oriented design are enclosed to avoid pinch points.

Handle 11" to 12" diameter pail.

Base Dimensions: L33" x W32". Overall height: 80". Ship weight: 180 Lb.

Optional Counter Weight Kit part # 3930-P (not shown) allows the base to be reversed to enable pouring beyond the front wheels. The capacity with this option installed is reduced to 75 Lb.



VIDEOonline

PailPRO™ 5-Gallon Pail Heaters

Heat your metal or plastic 5-gallon pail. The flexible heater band conforms to the curvature of the pail to heat the contents. Fits 11.25" +/- 1" diameter pail.



Model #	Heater Description	Thermostat
710-5-115	5-Gallon metal pail, 115V 550W, 4" wide band	50° to 425° F
710-5-230	5-Gallon metal pail, 230V 550W, 4" wide band	50° to 425° F
711-5-115	5-Gallon plastic pail, 115V 150W, 4" wide band	50° to 160° F
711-5-230	5-Gallon plastic pail, 230V 150W, 4" wide band	50° to 160° F

Model 152-5 PailPRO™ 5-Gallon Pail Truck

Ergonomic 2-wheel truck eases handling a heavy 5-gallon pail or can. Simply place the pail handle over the hook and pull back on the truck handle to lift the pail. It rolls easily on two 8" diameter MORTUF hard polyolefin wheels. When you're done, the pail truck stands upright by itself.

Capacity: 150 Lb. Shipping weight: 27 Lb.



PailPRO™ Can Tipper ideal for dispensing 5-gallon pails

These can tippers are ideal for dispensing small quantities from a 5-gallon can or pail. A safety lock holds pail in place. Dispensing height is 10". Fold for storage. Capacity: 75 Lb. per can.

Model 15 handles a single pail. Model 2-15 handles two pails. Model 15-SS is made of type 304 Stainless Steel and handles a single pail.



Model 15-SS



Model 2-15



The Specialist In Drum Handling Equipment

Morse Manufacturing Company, Inc.
 727 West Manlius Street
 East Syracuse, NY 13057-0518

Phone: (315) 437-8475
 Fax: (315) 437-1029
 Email: info@MorseDrum.com
 Website: MorseDrum.com



Drum Hand Pumps

Drum Pumps to dispense liquids

The self priming piston pumps on the forward and back strokes to yield a gallon in fewer than five cycles. Use for liquids at temperatures up to 80°F and maximum viscosity of 2,000 SSU (e.g. 30W motor oil). Each pump is compatible with specific chemicals. Check Morse website for chemical compatibility of each liquid by chemical name. It is the user's responsibility to take appropriate safety and protective measures with hazardous chemicals. Ship weight: 10-12 Lb.

Models 26, 27-1AE and 27-4AV are generally for liquids in pH 4 to 9 acidity/alkalinity range.

Models 28-5BV and 28-6BE are for a wider pH range.



Model #	Compatible Liquids (General Guide)
26	Petroleum products, lube oils
27-1AE	Methyl alcohol, ethyl alcohol
27-4AV	Some naphthas, some aromatics
28-5BV	Some chlorinated solvents, acids, aromatics, xylene
28-6BE	Some acids, caustics, ketones, acetates

Your Morse Dealer is:

Drum and Pail Heaters

Easy to use, flexible drum heaters provide a simple, effective and reliable way to heat the contents of your drums. There is a Morse Drum Heater for your 5-gallon pail, 30-gallon or 55-gallon drum, whether plastic, steel or fiber. Position the 4" wide band below the content level of your drum. It will conform to the curvature of the drum to conduct heat through the drum wall to the product inside.

Adjust the thermostat to automatically maintain the correct temperature. Two or more drum heaters may be used on the same drum for faster warming.

- Heaters for metal drum have 50° to 425° F (10° to 218° C) thermostat
- Plastic or fiber drum heaters have 50° to 160° F (10° to 71° C) thermostat



Model #	Heater Description	Fits Diameter
710-55-115	55-Gallon steel drum, 115V 1500W	22.5" +/- 1"
710-55-230	55-Gallon steel drum, 230V 1500W	22.5" +/- 1"
710-30-115	30-Gallon steel drum, 115V 1000W	18.25" +/- 1"
710-30-230	30-Gallon steel drum, 230V 1000W	18.25" +/- 1"
710-5-115	5-Gallon metal pail, 115V 550W	11.25" +/- 1"
710-5-230	5-Gallon metal pail, 230V 550W	11.25" +/- 1"
711-55-115	55-Gallon plastic or fiber drum, 115V 300W	22.5" +/- 1"
711-55-230	55-Gallon plastic or fiber drum, 230V 300W	22.5" +/- 1"
711-5-115	5-Gallon plastic pail, 115V 150W	11.25" +/- 1"
711-5-230	5-Gallon plastic pail, 230V 150W	11.25" +/- 1"

Use to melt, preheat, prevent freezing, control viscosity, or promote flow and dissolution. Each drum heater is equipped with cord. 115V heaters also include a plug. Not for use with flammables or in explosion hazard areas.

Ship weight: 2-3 Lb.

Drum Faucets

Model 65-20 Molasses Gate Faucet for viscous liquids made of grey iron with brass sliding plate closure. Fits 2" pipe thread.

Model 65-75 like model 65-20, but for 3/4" bung of metal drum.



Models 68-20 and 68-75

Model 68-20 Polyethylene Faucet for use with nonflammable, corrosive liquids. Has a fast half-turn on/off handle that stays open until you close it. Use to control dispensing of viscous liquids through the 2" bung of your metal drum.

Model 68-75 is like model 68-20 above, but sized for 3/4" bung thread. Use for more fluid liquids.



Model 68-20

Model #	Description	Ship Weight
65-20	Molasses Gate Faucet for 2" pipe thread	3.5 Lb.
65-75	Molasses Gate Faucet for 3/4" pipe thread	1.5 Lb.
68-20	2" Polyethylene Faucet	1 Lb.
68-75	3/4" Polyethylene Faucet	.1 Lb.

MORplug™ Drum Wrenches

Fit virtually any steel, plastic or fiber drum

MORplug™ drum wrenches have numerous surfaces and shapes to fit virtually all drum plugs on your steel, plastic or fiber drums. The generous size provides extra leverage and hand clearance.

Model 59 for drums of nonflammable materials.

Model 59SRM made of spark resistant manganese bronze, a precaution for drums of flammable material. It has high ultimate strength and extra elasticity.

Model 59SRZ is an economical wrench made of spark resistant, high-strength zinc aluminum alloy.

